



2012 Abridged Annual Report 2013

Consult the complete
2012-2013 Annual Report (in French)
on the Montreal Hooked on School website.

www.researeussitemontreal.ca



Montreal
Hooked on School

MISSION

Montreal Hooked on School's mission is to mobilize all partners in Montreal and become a focal point for initiatives that have a positive impact on young people, parents, and other concerned parties, with the objective of increasing school perseverance and success, and reconnecting with school.



3

targets

Achieve and surpass Montreal's ministerial high school graduation rate target of 77 percent by 2020.

Support school boards and targeted schools in reaching their graduation-rate targets and in implementing their success plans.

Contribute to reducing the vulnerability rate among preschoolers entering school by 5 percent over 5 years, as defined by Horizon 0-5.

5

orientations

Strengthen prevention strategies for 0-12-year-olds

Help 13-20-year-olds stay in, or return to, school

Mobilize local, regional and interregional actors

Document the Montreal reality and **support** knowledge transfer

Promote the value of education

4

priorities for action

Support action in the Island of Montreal's most sensitive areas, focusing on specific territories.

Foster connections among all partners and the community, as well as the cohesion of actions to promote school perseverance and success.

Document, promote and disseminate information relevant to actions that encourage school perseverance and success.

Consolidate the governance and organizational structure of Montreal Hooked on School.

2

areas of action

Local > support and guidance for the development and implementation of action plans aimed at increasing school perseverance and success in targeted areas.

Regional > workshop, awareness-raising, mobilization, coordination, monitoring, and knowledge-transfer activities on issues related to school perseverance and success offered across the Island of Montreal.

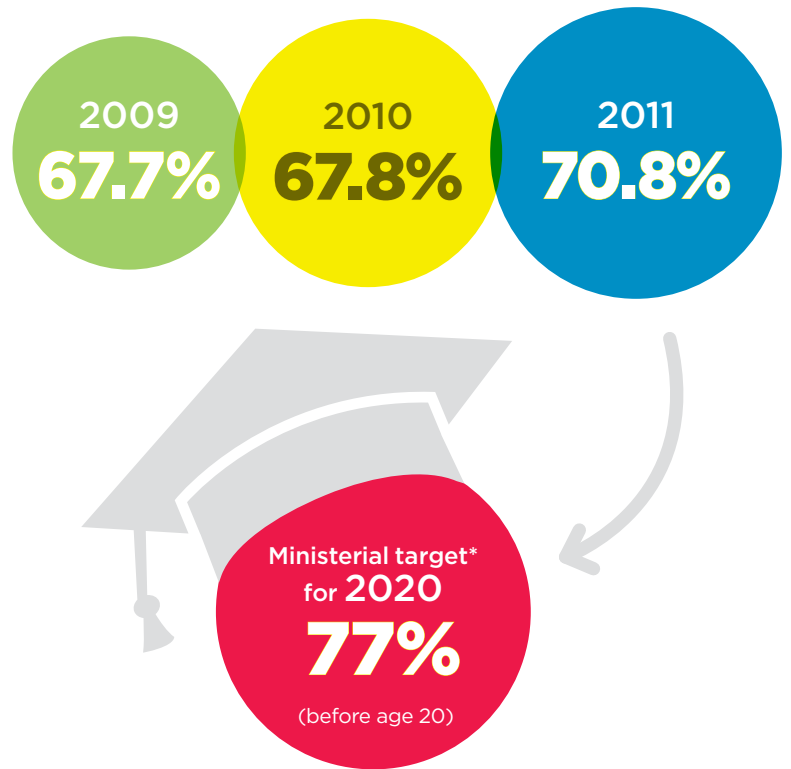


SCHOOL PERSEVERANCE IN MONTREAL



Improving results

The rate of graduation and qualification before the age of 20 has increased in recent years on the Island of Montreal, reaching 70.8% in 2011.



*Target for Montreal region

2011
Dropout rate

20.8%

Sources: Ministère de l'Éducation, du Loisir et du Sport, *Portraits des statistiques ministérielles*, 2010; ministère de l'Éducation, du Loisir et du Sport, *Diplomation et qualification au secondaire, 2011 édition*; ministère de l'Éducation, du Loisir et du Sport, *Diplomation et qualification par commission scolaire au secondaire, 2012 édition*; ministère de l'Éducation, du Loisir et du Sport, Charlemagne system, November 2012.

PRIORITY ACTION 1

Support action in the Island of Montreal's most sensitive areas, focusing on specific territories

Strategy to support and guide local action

In 2009, Montreal Hooked on School was entrusted with implementing the 10th path to success of the MELS plan *I care about school!* To this end, Montreal Hooked on School, supported by Réunir Réussir, the MELS and the five Island of Montreal school boards, participates in the implementation of community projects that promote school perseverance and success among youth who are at risk or who have dropped out in targeted areas on the Island of Montreal. This approach allows for a better linkage of the means used to increase the graduation rate in these neighbourhoods, but also for a better definition of the models that can be used afterwards in the whole Montreal region.

1
Development of a situational report of school perseverance

Documentation of the area's reality

2
Presentation of the situational report

Montreal Hooked on School presentation to key stakeholders

3
Appropriation of the situational report by the area

Dissemination of the report and development of a common vision by the area

8
Distribution of funding

7
Signing of an agreement to carry out the action plan

The action plans of targeted areas structure partnership action around schools. In this sense, each plan is steered by a school board, which signs an agreement with Montreal Hooked on School.

6
Validation of the action plan by the Montreal Hooked on School board of trustees

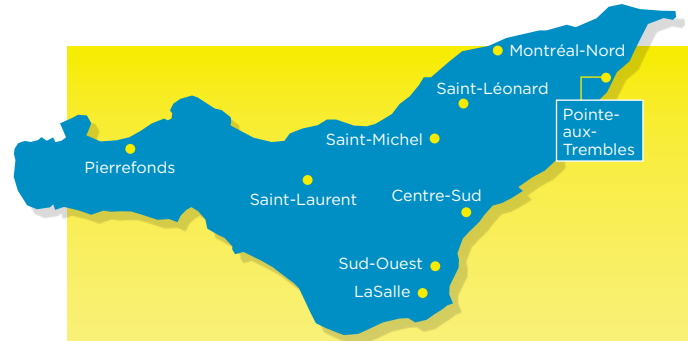
Approval of proposed measures as per the parameters of the *Terms of Reference**

4
Determination, by the area, of priority themes

Selection of themes and actions by the area's stakeholders following an analysis of the area's realities and needs

5
Development and submission of a joint action plan

Development, by the school board, of a plan made up of actions carried out in partnership with community organizations



The targeted areas, correlated to the five school boards on the Island of Montreal, are:

Centre-Sud

Commission scolaire de Montréal (CSDM)

LaSalle

Lester B. Pearson School Board (LBPSB)
Commission scolaire Marguerite-Bourgeoys (CSMB)

Montréal-Nord

Commission scolaire de la Pointe-de-l'Île (CSPI)
English Montreal School Board (EMSB)

Pierrefonds

Lester B. Pearson School Board (LBPSB)
Commission scolaire Marguerite-Bourgeoys (CSMB)

Pointe-aux-Trembles

Commission scolaire de la Pointe-de-l'Île (CSPI)

Saint-Laurent

Commission scolaire Marguerite-Bourgeoys (CSMB)

Saint-Léonard

Commission scolaire de la Pointe-de-l'Île (CSPI)

Saint-Michel

Commission scolaire de Montréal (CSDM)
English Montreal School Board (EMSB)

Sud-Ouest

Commission scolaire de Montréal (CSDM)
English Montreal School Board (EMSB)

*To view the *Terms of Reference*, visit the "Targeted Areas" section of our website at www.researeussitemontreal.ca.

2012-2013 HIGHLIGHTS

To promote school-focused mobilization among stakeholders from various sectors, and to support the implementation of collaborative action plans, Montreal Hooked on School documents and disseminates characteristic features of each targeted area, facilitates the sharing of expertise and practices in different communities, follows up on activities developed under action plans, takes part in meetings related to local efforts, and supports partnership-based initiatives aimed at priority issues.

- > Support for the implementation of **95 initiatives** involving **56,008** young people
- > Thanks to Réunir Réussir's support, addition of **3 new targeted areas**: Saint-Laurent, Saint-Léonard and Saint-Michel
- > Support and guidance provided to **9 targeted areas**
- > Investments totalling **\$1,414,546**
- > Participation in the development and implementation of **14 action plans**
- > Development, sharing, and dissemination of situational reports in targeted areas
- > Evaluation of the local action support strategy begun by a team led by Prof. Michel Janosz at Université de Montréal
- > Production of a development plan for new targeted areas by 2015

In financial terms, **Montreal Hooked on School contributes 35 percent of the total amount invested** in local action, with the rest of the funding coming from various other sources. In light of this situation, and of the effects of the support we provide, it would appear that **Montreal Hooked on School's strategy is an important factor on several levels** for local communities, encouraging stakeholder mobilization, the participation of community organizations in implementing local action plans, and the engagement of various financial partners in the process.



The approach in the targeted areas is based on implementing collaborative projects undertaken by schools and the community at large. In 2012-2013, over **170** organizations have taken part in activities developed by local action plans.

In 2012-2013, the action plans in targeted areas involved **111 schools** from the five Island of Montreal school boards, including:



92
Elementary schools

19
High schools

56,008
Young people

TARGETED AREA OVERVIEW FOR 2012-2013

Centre-Sud

6 schools

1,537 students

35 community partners

\$56,514

The area at a glance

The Centre-Sud neighbourhood has one of the highest dropout rates in Montreal and a high level of underprivilege. It should also be noted that nearly half the neighbourhood's families live under the low-income cut-off, and that all schools in the area are in a high decile of underprivilege.

2012-2013 highlights

Continuing the local efforts underway, 2012-2013 once again focused on the Campus initiative, which allows measures to be adapted to each school's individual identity. Actions were also aimed at encouraging community and parental involvement.

- > Mobilization and involvement of numerous community partners
- > Implementation of activities that promote the harmonious entry of children into preschool
- > Development of several projects to facilitate the elementary-high school transition

LaSalle

15 schools

6,963 students

Over 30 community partners

\$383,981

The area at a glance

The LaSalle area has a higher kindergarten student vulnerability rate than the Island of Montreal as a whole¹, along with a high rate of both single-parent families and immigration.

2012-2013 highlights

In 2012-2013, stakeholders in LaSalle worked to strengthen ties and consolidate their actions so as to provide youth with better

guidance. To this end, existing programs were enriched, new activities were launched, and partnerships were extended to an even broader community.

- > Increase in student participation in extracurricular activities (LBPSB)
- > Launch of workshops for parents on social and equity issues, in partnership with McGill University (LBPSB)
- > Elimination of dropouts among students taking part in the Cavalier-De LaSalle mentoring program and presentation of a positive assessment (CSMB)
- > Significantly increased registrations at École Cavalier-De LaSalle (CSMB)

Montréal-Nord

15 schools

9,821 students

Over 15 community partners

\$290,887

The area at a glance

The Montréal-Nord area is characterized by a kindergarten student vulnerability rate that is far higher than the rest of the region¹, along with a high rate of exceeding expected age upon entering high school.

2012-2013 highlights

In Montréal-Nord, 2012-2013 saw increased support for young people, with new projects being launched and existing projects broadening their scope in order to support more young people.

- > Implementation of strategies aimed at increasing parental involvement (CSPI)
- > Over 400 interventions involving young people (CSPI)
- > Launch of projects to promote emerging literacy and parent-child interaction (EMSB)



Pierrefonds

13 schools

7,355 students

7 community partners

\$90,000

The area at a glance

The Pierrefonds area includes not only one of the most underprivileged sectors, it also has the greatest number of families on the entire Island of Montreal. This means that in absolute terms, the area has a high number of dropouts.

2012-2013 highlights

Over the past year, while some Pierrefonds partners were proposed a completely new targeted approach, others concentrated their efforts on prevention projects, following up on the achievements of the previous year.

- > Meetings with local organizations (LBPSB)
- > Identification of students' needs, in partnership with local schools (LBPSB)
- > Work with 28 children and 19 families as part of the *Accompagne-moi dans ma maison* program (CSMB)
- > Preparation for school of 76 students from cultural communities (CSMB)

Pointe-aux-Trembles

12 schools

4,758 students

8 community partners

\$178,785

The area at a glance

The Pointe-aux-Trembles area has a low rate of elementary school success, combined with a high dropout rate. To this reality is added a high proportion of parents with a low level of education.

2012-2013 highlights

The year 2012-2013 was marked by the mobilization of partners in Pointe-aux-Trembles. By maintaining established partnerships, actions undertaken with youth and families resulted in a number of achievements.

- > Participation of over 500 area students in the Festival de robotique
- > Significant increase in parental participation in school activities
- > Increased student involvement in school and extracurricular activities

Saint-Laurent*

11 schools

6,833 students

7 community partners

\$34,155

The area at a glance

While the Saint-Laurent neighbourhood has a low rate of underprivilege overall, it is important to point out that nearly one-third of families live below the low-income cut-off and that the rate of child vulnerability is well above the Island of Montreal average¹.

2012-2013 highlights

Saint-Laurent stakeholders have been working together for a number of years. In 2012-2013, the development of the action plan led to the launch of several new initiatives and created new partnerships.

- > Launch of a bullying and violence prevention plan
- > Development of the *Intervenant communautaire scolaire* project
- > Implementation of new, simple and effective methods to coordinate actions

¹ The data available at the time of printing are from a 2008 study by the Agence de la santé et des services sociaux de Montréal. For results from the latest study on child development, see *Enquête québécoise sur le développement des enfants à la maternelle* (2012).

* Newly targeted areas. Because these areas are still in the planning process, funding has not yet been granted in some of them.



Saint-Léonard*

8 schools

5,701 students

16 community partners

Actions and funding to come in 2013-2014

The area at a glance

The Saint-Léonard neighbourhood faces numerous factors that affect school perseverance, including an increase in the number of new immigrants, a high rate of delay among elementary school students, and a high dropout rate among boys.

2012-2013 highlights

In 2012-2013, stakeholders from all sectors of this newly targeted area gathered with the goal of developing an action plan that would focus efforts on issues specific to Saint-Léonard.

- > Organisation of meetings of local partners
- > Determination of the orientations and priority objectives of the action plan
- > Identification of three directions of intervention



Saint-Michel*

12 schools

6,971 students

13 community partners

Actions and funding to come in 2013-2014

The area at a glance

All schools in Saint-Michel fall within the highest rates of socioeconomic underprivilege, which has a significant effect on school perseverance. This is even more so given that in some sub-sectors of Saint-Michel, the rate of vulnerability among kindergarten students is high in all school-readiness domains¹.

2012-2013 highlights

In Saint-Michel, the past year has been a time to consolidate partner involvement and to build coordinated approaches within action plans that reflect the area's needs and priorities.

- > Implementation of local trans-sectoral governance (CSDM)
- > Establishment of an inclusive and interactive process (60 participants at 5 major meetings) (CSDM)
- > Identification of priorities for John F. Kennedy High School (EMSB)
- > Development of the 2013-2015 action plan (EMSB)

Sud-Ouest

19 schools

6,069 students

41 community partners

\$380,224

The area at a glance

The Sud-Ouest neighbourhood suffers from significant underprivilege: a considerable portion of the area's families live under the low-income cut-off, and most of the schools have a high socioeconomic underprivilege index score. Adding to this precarious situation is a worrisome number of students with difficulties, who make up half of all high school students, and a high dropout rate.

2012-2013 highlights

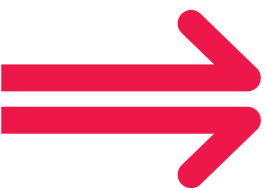
Over the past year, efforts in the Sud-Ouest have focused on maintaining current projects and developing new initiatives to improve graduation rates and to increase the participation of community organizations in the local action plans.

- > Continuation of 21 projects and development of 6 new initiatives (CSDM)
- > Determination of the themes on which the actions implemented in 2013-2014 will hinge (CSDM)
- > Expansion of partnerships with McGill University to develop numeracy and literacy skills (EMSB)
- > Exploration of community partnerships aimed at developing an artistic centre (EMSB)

¹ There are five school-readiness domains: physical health and well-being, social competency, emotional maturity, language and cognitive development, and communications skills and general knowledge.

The data available at the time of printing are from a 2008 study by the Agence de la santé et des services sociaux de Montréal. For results from the latest study on child development, see *Enquête québécoise sur le développement des enfants à la maternelle* (2012).

* Newly targeted areas. Because these areas are still in the planning process, funding has not yet been granted in some of them.



PRIORITY ACTION 2

Foster connections among all partners and the community, as well as the cohesion of actions to promote school perseverance and success



Équi T-É program partners are: Island of Montreal carrefours jeunesse-emploi (CJE), all five Montreal school boards, Emploi-Québec, Forum Jeunesse de l'île de Montréal, Montreal Hooked on School, and local partners.

Hooked on School Days

Since 2011, Montreal Hooked on School has coordinated Montreal's participation in Hooked on School Days (HSD), which highlight the importance of encouraging our youth, congratulating them for their efforts, and hearing what motivates them. Continuing its growth in 2013, the third annual HSD event in Montreal demonstrated that mobilization around the issue of school perseverance and success is spreading in the Montreal region. Thanks to the activities organized during the event, thousands of youth received messages of encouragement from their friends and family and from a broad spectrum of Montrealers.

2012-2013 highlights

- > **1,310** activities organized in communities
- > **435** organizers and partners
- > **217,000** participants
- > **507,708** users reached through social media
- > **50,000** wearers of the perseverance ribbon
- > **13** talks by the HSD Squad, made up of youth who have reengaged with school
- > **7** video capsules
- > Encouragement given to **thousands** of young people

Emergent literacy programs

Under an agreement with the ministère de l'Éducation, du Loisir et du Sport, Montreal Hooked on School guides local stakeholders in launching or continuing emergent literacy programs (*Programme d'aide à l'éveil à la lecture et à l'écriture*—PAÉLÉ). This initiative was started to improve literacy among children in underprivileged areas. In 2012-2013, Montreal Hooked on School continued its work in this area by supporting the establishment of a committee, by taking part in activities to promote emergent literacy programs, and by participating in the development of an awareness campaign.

2012-2013 highlights

- > Support for the establishment of a new emergent literacy committee in Ahuntsic, under the aegis of the regional committee
- > Presentation of the emergent literacy program in several neighbourhoods
- > Development of a website
- > Participation in developing an awareness campaign for parent-child reading activities
- > Membership on the wider regional committee, the local regional committee, and the Web, health booklet, and PAÉLÉ guidance subcommittees

Province-wide conference on school perseverance

In 2012-2013, the interregional conference *Rencontres interrégionales sur la persévérance et la réussite scolaires (RIPS)* changed its name to *Grandes rencontres sur la persévérance scolaire (GRPS)*. Subsequent to taking part in the RIPS meetings, Montreal Hooked on School joined the organizational committees for GRPS, dedicating a significant portion of the past year in preparing the third province-wide conference on solutions to the dropout problem, which will be held in Montreal from November 4-6, 2013.

2012-2013 highlights

- > Organizational partner of the third edition of GRPS
- > Participation on the *Poursuivons* orientation committee, which has the mandate of proposing an updated and inclusive vision of the Québec school perseverance and success movement

Équi T-É program

Montreal Hooked on School is the regional coordinator of the Équi T-É program, which promotes work-study balance by providing specialized support for students and encouraging businesses and professionals to adopt practices that promote school perseverance and success. Over the past year, this initiative increased from 17 Montreal CJE territories to now cover the entire Island of Montreal. The program also launched a campaign to encourage participating businesses to renew their commitments and to raise awareness among new employers.

2012-2013 highlights

- > Expansion of program to cover the entire Island of Montreal
- > Launch of the Équi T-É awareness campaign
- > Development of information resources about work-study balance
- > Consolidation of awareness practices aimed at businesses
- > Support for nearly **300** working students
- > Over **4,500** students informed about work-study balance
- > **22** participating schools
- > **221** new participating businesses
- > Nearly **700** Équi T-É businesses in Montreal

Committees and working groups

The participation and contribution of all sectors of society are required to put actions into place aimed at increasing graduation rates, and joint action is an important aspect of this process. In order to foster the cohesion of strategies and the transfer of information among different stakeholders, Montreal Hooked on School sits on a number of committees and working groups that promote school perseverance and success.



PRIORITY ACTION 3

Document, promote and disseminate information relevant to actions that encourage school perseverance and success

Situational reports and reference sheets for targeted areas

To help orient actions in targeted areas, Montreal Hooked on School develops portraits of these areas using data on determinants of school perseverance, including demographic, socioeconomic, and educational figures. The goal of these reports is to promote a common vision of the issues in each area and to help prioritize action. This year, Montreal Hooked on School produced reports for the new targeted areas and distilled all of the reports produced since 2012 into 14 concise and dynamic overviews.

2012–2013 highlights

- > Produced **5** situational reports
 - **Pierrefonds** – Lester B. Pearson School Board / **Saint-Laurent** • Commission scolaire Marguerite-Bourgeoys / **Saint-Léonard** • Commission scolaire de la Pointe-de-l'Île / **Saint-Michel**
 - Commission scolaire de Montréal / **Saint-Michel** – English Montreal School Board
- > Shared **4*** of the 5 reports with stakeholders in the targeted areas
- > Produced **14** reference sheets of the situational reports

*The Pierrefonds report will be released in the fall.

Networking and sharing

Montreal Hooked on School's activities include sharing and networking opportunities that foster a common understanding of school perseverance. Such activities aim to inform and raise awareness of issues related to the dropout problem, to develop solutions, and support joint-efforts among various sectors. Over the past year, Montreal Hooked on School organized two conferences to share the expertise of numerous researchers on determinants of school perseverance and success.

2012–2013 highlights

- > Conference on gender-differentiated approaches to fostering school perseverance and success
Over 250 participants
- > Lecture and world cafe on the academic success of immigrant high school students (in collaboration with GRIES: *Groupe de recherche Immigration, équité et scolarisation*)
Over 150 participants

Documentation of student concerns and aspirations

Many of the workshops Montreal Hooked on School offers to grade 6 and secondary 1 students employ a voting system. The system collects data, completely confidentially, about the opinions or level of knowledge of youth on a wide range of topics, including school, success, sources of influence, and diploma options. In 2012–2013, 626 of the 731 workshops given in schools of the five Island of Montreal school boards included this type of interaction. As a result, 9,418 students were polled about their concerns about the

elementary-high school transition, as well as their academic and professional aspirations.

2012–2013 highlights

- > Main issues concerning the transition from elementary to high school: **3,138** students
- > Perceptions and aspirations of secondary 1 students: **6,280** students

Overview of school perseverance and success in Montreal

To provide a better understanding of school perseverance in Montreal and better inform stakeholders of the reality of Montreal's youth, Montreal Hooked on School produced a new edition of the publication *School Perseverance and Success in Montreal*. This booklet contains data on Montreal-specific matters, graduation rates, types of dropouts, the reality of Montreal youth, protective factors for school perseverance, and much more.

Communications plan

In 2012–2013, Montreal Hooked on School drew up a communications plan to support its actions and ensure that school perseverance and success remain a high priority for Montreal.

2012–2013 highlights

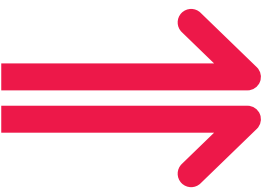
- > Analysis of the Montreal Hooked on School environments
- > Consultation with Montreal partners
- > Development of a strategic platform
- > Identification of communications goals
- > Definition of communications strategies
- > Determination of means of action

Ties newsletter

Montreal Hooked on School's newsletter was created to **transfer, inform, engage, and succeed**. With this resource, Montreal Hooked on School aims to disseminate information, expertise, and practices that promote school perseverance and success among young people. The newsletter gained nearly 170 new subscribers over the past year, for a total of 2,340 recipients.

2012–2013 highlights

- > **4** bilingual issues and **1** special issue
- > **2,340** recipients



PRIORITY ACTION 4

Consolidate the governance and organizational structure of Montreal Hooked on School



Assembly of members

The Montreal Hooked on School assembly of members includes 32 regional networks, making it an ideal forum for conveying information aimed at coordinating actions that promote school perseverance and success.

2012-2013 highlights

- > 4 meetings
- > 2 new members:
 - Ministère de l'Immigration et des Communautés culturelles (MICC)
 - Université du Québec à Montréal (UQAM)

Board of trustees

The Montreal Hooked on School board has seven trustees from member organizations, who are elected by the membership. The board includes representatives from all sectors.

2012-2013 highlights

- > 10 meetings

Mobilization committee

Montreal Hooked on School also has a mobilization committee, established to support local and regional mobilization.

2012-2013 highlights

- > 4 meetings

FINANCIAL PARTNERS

Montreal Hooked on School's 2012-2013 activities were made possible through funding from our financial partners. We thank them for their support.



MEMBERS

Montreal Hooked on School is a regional organization comprising 32 members from different sectors, all dedicated to working together and determined to keep young people at the centre of their efforts.

Together, they are committed to developing partnership projects to enhance the reach and impact of actions that encourage school perseverance and success, and reconnecting with school.



417 Saint-Pierre Street, Suite 401
Montreal, QC H2Y 2M4
T. 514-286-2346 F. 514-286-2347
www.reseaeuissitemontreal.ca

Proud partner of
Montreal Hooked on School



Educational sector



- > Association of Montreal School Administrators
- > Association montréalaise des directions d'établissement scolaire (AMDES)
- > Fédération autonome de l'enseignement
- > McGill University
- > Montreal Teachers Association
- > Regroupement des collèges du Montréal métropolitain (RCMM)
- > Université du Québec à Montréal

Community sector

- > Institut de coopération pour l'éducation des adultes (ICÉA)
- > Regroupement des organismes communautaires québécois de lutte au décrochage (ROCQLD)
- > Table des Carrefours jeunesse-emploi de l'Île-de-Montréal
- > The YMCAs of Québec

Institutional sector

- > Agence de la santé et des services sociaux de Montréal
- > Comité de gestion de la taxe scolaire de l'île de Montréal
- > Conférence régionale des élus de Montréal
- > Conseil régional des partenaires du marché du travail
- > Emploi-Québec
- > Forum jeunesse de l'île de Montréal
- > Ministère de l'Éducation, du Loisir et du Sport
- > Ministère de l'Immigration et des Communautés culturelles
- > Ministère de la Famille
- > Service de police de la Ville de Montréal
- > Ville de Montréal

Business sector

- > Board of Trade of Metropolitan Montreal
- > Centraide of Greater Montreal
- > Drakkar Human Resources
- > Fondation de lutte au décrochage scolaire

Guests

- > Table de concertation des organismes au service des personnes réfugiées et immigrantes (TCRI)

Observers

- > Engagement jeunesse

