

A black and white photograph of a person sitting on concrete stairs. They are wearing a plaid shirt, dark jeans, and white sneakers. They are holding a spiral-bound notebook and a pen, appearing to be writing. The background is a blurred outdoor setting.

2013

ABRIDGED ANNUAL REPORT

2014

Consult the complete 2013-2014
Annual Report (in French) on the
Montreal Hooked on School website.

www.reseautreussitemontreal.ca



Montreal
Hooked on School

MISSION

Montreal Hooked on School's mission is to mobilize all partners in Montreal and become a focal point for initiatives that have a positive impact on young people, parents, and other concerned parties, with the objective of increasing school perseverance and success, and reconnecting with school.

3 TARGETS

Achieve and surpass Montreal's ministerial high school graduation-rate target of 77 percent by 2020.

Support school boards and targeted schools in reaching their graduation-rate targets and in implementing their success plans.

Contribute to reducing the vulnerability rate among preschoolers entering school by 5 percent over 5 years, as defined by Horizon 0-5.

5 ORIENTATIONS

Strengthen prevention strategies for 0-12-year-olds.

Help 13-20-year-olds stay in, or return to, school.

Mobilize local, regional and interregional actors.

Document the Montreal reality and support knowledge transfer.

Promote the value of education.

4 PRIORITIES FOR ACTION

Support action in the Island of Montreal's most sensitive areas, focusing on specific territories.

Foster connections among all partners and the community, as well as the cohesion of actions to promote school perseverance and success.

Document, promote and disseminate information relevant to actions that encourage school perseverance and success.

Improve evaluation strategies.

2 AREAS OF ACTION

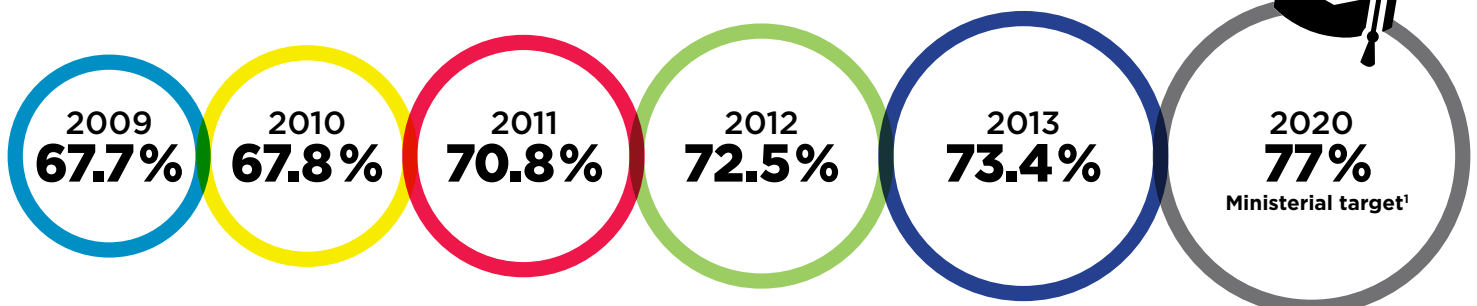
Local > Provide support and guidance in developing and implementing action plans to improve school perseverance and success in targeted areas, and in developing and implementing strategic actions among populations with a high dropout risk.

Regional > Provide facilitation, awareness-raising, mobilization, coordination, monitoring, and knowledge transfer throughout the Island of Montreal on issues related to school perseverance and success.

SCHOOL PERSEVERANCE IN MONTREAL

Montreal graduation rates continue to rise!

The rate of high school graduation and qualification before age 20 continues to increase in Montreal, rising from 72.5 percent in 2012 to 73.4 percent in 2013.



20.8% **2011 DROPOUT RATE** ²

¹ Target for the Montreal region before the age of 20

² Most recent data available at date of publication.

Sources: Ministère de l'Éducation, du Loisir et du Sport (MELS), *Portraits des statistiques ministérielles*, 2010; MELS, *Diplomation et qualification par commission scolaire au secondaire*, éditions 2011, 2012, 2013, 2014; MELS, Charlemagne system, November 2012.

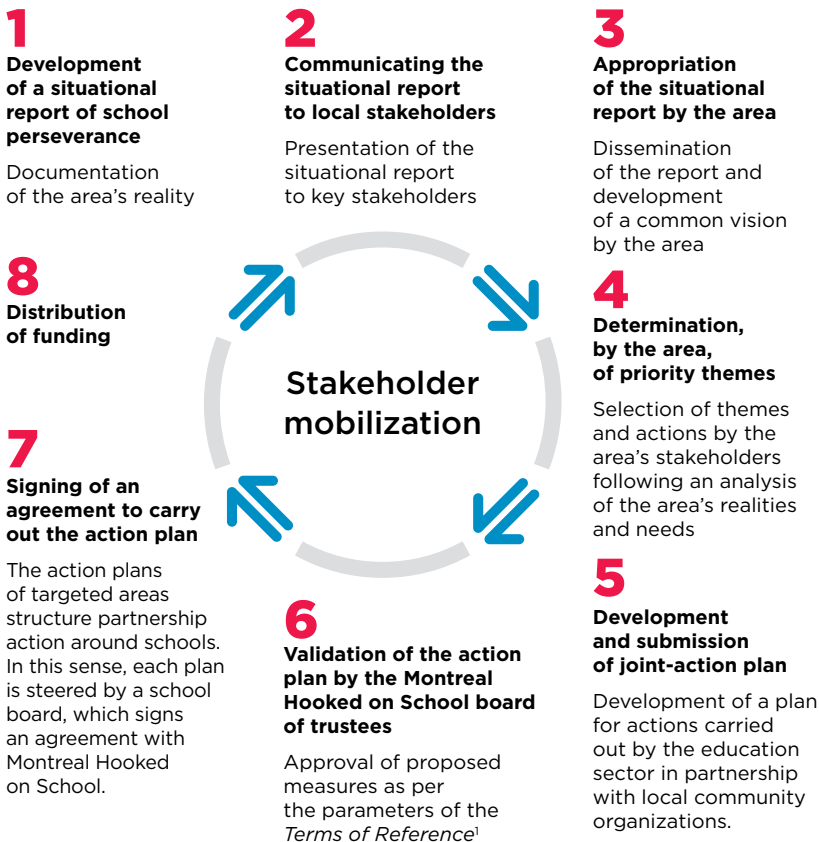
PRIORITY ACTION 1

Support action in the Island of Montreal's most sensitive areas, focusing on specific territories.

SUPPORT AND GUIDANCE FOR LOCAL ACTION

In 2009, Montreal Hooked on School was charged with implementing the 10th path to success of the MELS *I care about school!* plan. As part of this strategy, Montreal Hooked on School supports the development of community projects aimed at improving school perseverance and success among youth who are at risk or who have dropped out in targeted areas on the Island of Montreal.

The model of action established in targeted areas is unique in that it is closely tied to local realities and to priorities set by schools to meet the needs of at-risk youth. This process ensures the community and its schools coordinate their action through partnership projects based on the needs of youth. Through such associations, efforts can be deployed, continued and combined to foster the consistency of actions aimed at school perseverance locally.



The targeted areas, along with their associated school boards, are as follows:

- 1 Centre-Sud**
Commission scolaire de Montréal
- 2 Hochelaga-Maisonneuve**
Commission scolaire de Montréal
- 3 LaSalle**
Lester B. Pearson School Board
Commission scolaire Marguerite-Bourgeoys
- 4 Montréal-Nord**
Commission scolaire de la Pointe-de-l'Île
English Montreal School Board
- 5 Pierrefonds**
Lester B. Pearson School Board
Commission scolaire Marguerite-Bourgeoys
- 6 Pointe-aux-Trembles**
Commission scolaire de la Pointe-de-l'Île
- 7 Rivière-des-Prairies**
Commission scolaire de la Pointe-de-l'Île
- 8 Saint-Laurent**
Commission scolaire Marguerite-Bourgeoys
- 9 Saint-Léonard**
Commission scolaire de la Pointe-de-l'Île
- 10 Saint-Michel**
Commission scolaire de Montréal
English Montreal School Board
- 11 Sud-Ouest**
Commission scolaire de Montréal
English Montreal School Board

In order for Montreal Hooked on School to provide assistance that is adapted to the progress of new territories as they are added to its local action strategy, the process begins with an analysis of earlier efforts. This allows Montreal Hooked on School to adapt to the existing dynamic by taking into account previous actions and current needs.

¹ To view the *Terms of Reference*, visit the "Targeted Areas" section of our website at www.reseautreussitemontreal.ca.





2013-2014 HIGHLIGHTS

To encourage school-focused mobilization, and to support the implementation of joint-action plans, Montreal Hooked on School documents and distributes information pertaining to the reality of each targeted area, promotes coordination between schools and the community, facilitates the sharing of expertise and practices from different sectors, takes part in implementing activities set out in the action plans, participates in meetings related to local efforts, and supports partnership initiatives that further priority issues.

- > Support for the implementation of **153 initiatives** reaching **35,792 children, students and parents**¹
- > Thanks to support from Réunir Réussir, the addition of **2 new targeted areas**: Hochelaga-Maisonneuve and Rivière-des-Prairies
- > Support and guidance provided to **11 areas**
- > Investment of **\$2,276,357**
- > Participation in the development and implementation of **16 action plans**
- > Production and dissemination of situational reports and fact sheets

Given the benefits of the support provided, Montreal Hooked on School's strategy appears to act on several levels as an important catalyst within communities, encouraging the mobilization of stakeholders, the participation of community organizations in implementing local action plans, and the engagement of various funding partners.

The action plans of targeted areas have elicited the participation of a growing number of community partners in joint actions focused on the needs of youth. In 2013-2014, the number of organizations involved in the activities of local action plans rose from about 170 to **over 260**.

IN 2013-2014, THE ACTION PLANS OF THE TARGETED AREAS REACHED:



108 schools of the five Island of Montreal school boards

84

elementary schools

18

high schools

6

adult education centres

981

children 0 to 5 years old



31,449

students

3,362

parents



63.7%

of Montreal's underprivileged areas²

¹ In 2013-2014, Montreal Hooked on School improved the accountability process for targeted areas in order to provide an even more accurate account of the populations targeted by local initiatives. Hence, though the total number of people affected this year is lower than last year, the number is a more nuanced representation of the actions carried out.

² Areas that, according to the 2013 Poverty Map of the Comité de gestion de la taxe scolaire de l'île de Montréal, have an important concentration of underprivilege.

2013-2014 OVERVIEW OF TARGETED AREAS

Centre-Sud

9 projects
7 schools
1,815 children,
students and parents
35 partners
\$149,202

Overview

The Centre-Sud area faces many challenges, including a higher level of deprivation than the Montreal average and sectors with high levels of vulnerability among children. In addition, a majority of students leave school without earning a diploma or qualification.

In the Centre-Sud, 2013-2014 was a year for action focused on school readiness, the elementary-high school transition, and promoting the value of high school. This was achieved through projects that mobilized the entire community in order to give youth the best chance to succeed.

2013-2014 highlights

- > Mobilisation and participation of numerous community partners
- > Boost in the number of activities facilitating the entry of children into preschool
- > Continuation of a number of projects to facilitate the elementary-high school transition

LaSalle

31 projects
23 schools
6,669 students and parents
23 partners
\$453,140

Overview

LaSalle is dealing with numerous issues, in particular the high level of vulnerability among preschoolers and a student population made up primarily of immigrants, which implies the need for support to smooth their integration into the school system.

In LaSalle, 2013-2014 saw the implementation of many actions. Activities for students helped them find fulfillment and success, while other initiatives provided information and resources for families who have little contact with school, including those from cultural communities.

2013-2014 highlights

- > Tutoring project: academic achievement of 12 students formerly on the verge of failing (LBPSB)
- > Organisation of meetings with partners to improve programs (LBPSB)
- > Introduction of a school-family-community agent (CSMB)
- > Organisation of a festival celebrating the contributions of everyone to Québec society (CSMB)

Montréal-Nord

24 projects
15 schools
10,980 children,
students and parents
30 partners
\$460,476

Overview

Foremost among the challenges facing Montréal-Nord are a considerable level of deprivation, a significant proportion of mothers lacking a diploma, and a high number of single-parent families. There is also a very high level of multi-ethnicity.

In 2013-2014, partners in Montréal-Nord focused on implementing and expanding numerous projects aimed at youth from preschool to high school, in particular by way of initiatives involving personalized guidance, peer-group support, activities in the community, and workshops for learning new skills.

2013-2014 highlights

- > Establishment of flagship projects in new schools (CSPI)
- > Development of 15 projects in the area (CSPI)
- > Implementation of two new violence and bullying prevention projects (EMSB)
- > Approaches aimed at building on existing partnerships and creating new ones (EMSB)

Pierrefonds

13 projects
6 schools
2,190 children,
students and parents
26 partners
\$200,148

Overview

In addition to a considerable level of deprivation in some sectors, the Pierrefonds area shows a high level of vulnerability among kindergarten-aged students. The area also has one of the highest numbers of families on the Island.

In 2013-2014, the community of Pierrefonds took stock of its mobilization in order to redefine its strategies and projects aimed at fostering student success, to facilitate closer ties between schools and the community, to raise awareness of local services and resources, and to discuss the results stemming from the joint-action plan.

2013-2014 highlights

- > Development of a project to support student performance at school (LBPSB)
- > Meetings with the community aimed at project development (LBPSB)
- > Organisation of an activity to strengthen ties between schools and the community (CSMB)
- > Holding workshops aimed at preparing vulnerable children for kindergarten (CSMB)

Pointe-aux-Trembles

8 projects
12 schools
4,730 students and parents
8 partners
\$246,594

Overview

One issue observed in Pointe-aux-Trembles is the value placed on education. In addition, one youth in four drops out of high school, and one mother in seven lacks a diploma. Other issues include the risk of vulnerability among kindergarten-aged students and the high number of single-parent families.

In 2013-2014, students in Pointe-aux-Trembles took part in a number of large-scale projects that sparked their passion for the arts, fashion, science, and technology; that stimulated their creativity; and that fostered their sense of belonging at school.

2013-2014 highlights

- > “Tenue par excellence” prize won by students participating in the Gala Relève-Mode
- > Participation of over 700 students at the Robotics Festival

Saint-Laurent

11 projects
13 schools
4,362 children,
students and parents
14 partners
\$118,364

Overview

Saint-Laurent is dealing with several issues, including a high rate of vulnerability among children and a significant majority of immigrant students who require support and integration assistance. In Saint-Laurent, nearly one in three youth leave school without a diploma, and girls drop out more than boys.

In 2013-2014, partners in Saint-Laurent implemented a new consultation model aimed at strengthening ties between schools and the community. This new approach appears to be very popular among the various partners and has facilitated the development of a number of projects.

2013-2014 highlights

- > Implementation of a new consultation model
- > Development of 11 partnership projects

Saint-Léonard

3 projects
4 schools
190 students
12 partners
\$56,900

Overview

A number of changes have taken place in Saint-Léonard over the past 10 years. For instance, the targeted area now has a vast majority of students coming from immigrant families. In addition, the rapid rise in the number of children in the district has caused some schools to double their capacity.

2013-2014 was a year of action for Saint-Léonard. A substantial mobilization effort helped finalize the area's action plan and initiate projects aimed at meeting needs identified through local consultations.

2013-2014 highlights

- > Submission of an action plan and implementation of initiatives
- > Continued development of the school-family-community approach
- > Launch of the project “La force d'une équipe”

Since part of the year was spent on consultations, the funding allocated to Saint-Léonard was used to launch projects that will be fully operational only in 2014-2015.

Saint-Michel

15 projects
13 schools
995 children,
students and parents
24 partners
\$145,968

Overview

Saint-Michel is characterized by a highly multiethnic population and considerable deprivation. Another important issue is the dropout rate, which is nearly 50 percent, with girls dropping out nearly as much as boys in one of the area's high schools.

In 2013-2014, Saint-Michel focused on projects aimed at student achievement through preparation for entry into school, parental support, tutoring services and homework help for high school students, along with many types of extracurricular activities.

2013-2014 highlights

- > Implementation of a home-to-school transition project (CSDM)
- > Creation of parental self-help groups (CSDM)
- > Launch of homework assistance and tutoring programs (EMSB)
- > Various extracurricular activities (EMSB)

Sud-Ouest

39 projects
15 schools
3,861 children,
students and parents
53 partners
\$445,565

Overview

The Sud-Ouest area presents a number of risk factors. Most of the schools in the district are located in underprivileged areas. This is combined with low graduation rates among both students and mothers. In addition, girls drop out at a higher rate than boys in two of the area's high schools.

2013-2014 was notable for the establishment of a common vision among all partners, the creation of a new oversight process for the local action plan and the launch of new activities that, among other things, stimulated students' creativity.

2013-2014 highlights

- > Implementation of two innovative projects: Laboratoire créatif and El sistema (CSDM)
- > Meetings with local stakeholders to identify a shared vision of the area's needs (CSDM)
- > Increase in the number of extracurricular activities offered (EMSB)
- > Implementation of the BUMP social mediation project (EMSB)

TWO NEW TERRITORIES

Hochelaga-Maisonneuve

22 partners
Newly targeted area
Projects planned for 2014-2015

Overview

Several risk factors are observed in Hochelaga-Maisonneuve, including significant socioeconomic deprivation, a high percentage of vulnerable children, and a dropout rate of two in five students.

Ongoing since 2012, the joint efforts of partners in Hochelaga-Maisonneuve led to the identification of common priorities in 2013-2014 and the adoption of an action plan that will pave the way for school perseverance initiatives.

2013-2014 highlights

- > Community consultations
- > Adoption of a joint-action plan based on established priorities (preparation for starting school, better integration of children and families into the community, development of self-esteem)

Rivière-des-Prairies

17 partners
Newly targeted area
Projects planned for 2014-2015

Overview

Data for Rivière-des-Prairies show that the area has several islands of poverty, a significant percentage of children vulnerable in at least one developmental domain, and a strong majority of immigrant students who face challenges related to integration.

A newly targeted area, Rivière-des-Prairies has spent the past year mobilizing community stakeholders around setting priorities for action and developing an action plan to meet the identified needs related to school perseverance and success.

2013-2014 highlights

- > Development of an action plan aimed at three priority areas: school transitions, overall youth development, and school-family-community ties.
- > Preparation of actions aimed at implementing the plan in the fall of 2014.

Montreal Hooked on School receives support from the following partners to implement local action strategies:





STRATEGIC ACTIONS AMONG POPULATIONS WITH THE HIGHEST DROPOUT RISK

As the local action strategy has rolled out, a needs assessment of various communities shows that most of the highly sensitive territories covered by the English Montreal and Lester B. Pearson school boards are already supported by the Montreal Hooked on School strategy. However, this assessment also revealed that the needs of English populations, which are often scattered throughout the Montreal region and which experience significant problems, are not always visible or met by the territorial approach. For this reason, a series of strategic actions was put in place at the regional rather than local level, aimed at reaching young Anglophone Montrealers at risk of dropping out.

2013-2014 highlights

- > Development of an individualized intervention project, in partnership with the English Montreal and Lester B. Pearson school boards, Batshaw Youth and Family Centres, and The YMCAs of Québec
- > Delivery of adapted support to nearly 300 youth
- > Participation of 10 local organizations

Montreal Hooked on School receives support from the following partners to implement the individualized intervention project:



EMERGENT LITERACY ASSISTANCE PROGRAM



Under an agreement signed with the ministère de l'Éducation, du Loisir et du Sport, Montreal Hooked on School guides local stakeholders in launching or continuing activities under the government's emergent literacy assistance program (*Programme d'aide à l'éveil à la lecture et à l'écriture—PAÉLÉ*). The program supports the integration of emergent literacy activities into family practices and in various locations and services frequented by children under 5 years old, their parents, and their grandparents in underprivileged areas.

2013-2014 highlights

- > Support for the launch of the emergent literacy assistance program in Bordeaux-Cartierville, under the aegis of the regional PAÉLÉ committee
- > Work with **4 new neighbourhoods** with a view to launching in 2014-2015
- > Increased guidance among Montreal's 18 local emergent literacy committees
- > Implementation of the campaign "Une dose de lecture par jour pour grandir en santé"
- > Distribution of **3,500 booklets** to raise parental awareness of the benefits of reading
- > Continued coordination with Avenir d'enfants to foster consistency of early childhood measures

Montreal Hooked on School receives support from the following partner to implement this action:



PRIORITY ACTION 2

Foster connections among all partners and the community, as well as the cohesion of actions to promote school perseverance and success.

HOOKED ON SCHOOL DAYS

Since 2011, Montreal Hooked on School has coordinated Montreal's participation in Hooked on School Days (HSD), which highlights the importance of being there to support youth and congratulate their efforts. In 2014, Montreal stakeholders showed that HSD is now well established in their communities, with ever-increasing participation and activities, adapted specifically for youth, that help to improve school perseverance. This year, HSD saw a number of emotional moments, with thousands of people taking time out to send messages of encouragement and symbols of support to young people.

2013-2014 highlights

- > **1,500** activities
- > **425** organizers and partners
- > **50,000** people wearing the school perseverance ribbon
- > Over **217,000** participants¹
- > **700** students hearing **19** testimonials from **6** inspiring people who reconnected with school
- > **9,500** ribbons handed out at Berri-UQAM and Places-des-Arts Metro stations and at Central Station
- > A Québec-wide public campaign
- > **72** Bureau en Gros stores displaying the ribbon and public campaign province-wide
- > **Thousands** of youth encouraged



In 2014, an installation of the green school perseverance carpet and speech bubbles created a new way to raise awareness of school perseverance and encourage Montrealers to support a young person, with participants taking pictures of themselves in front of messages of encouragement.

Montreal Hooked on School receives support from the following partners to implement this action:



ÉQUI T-É PROGRAM (Regional coordination of employer component)

Montreal Hooked on School is the regional coordinator of the Équi T-É Program's employer component, which promotes work-study balance by encouraging businesses and professionals to adopt practices that contribute to school perseverance and success among young people. In 2013-2014, efforts were primarily directed toward approaching corporate head offices in order to facilitate the participation of individual outlets in the program. Over the past year, new projects were also launched to better understand youth work habits and lifestyles and thereby help them better balance work and school.

2013-2014 highlights

- > **25** head offices and **5** industry associations approached
- > **2** leading organizations newly registered: Comité sectoriel de main-d'oeuvre du commerce de l'alimentation and L'Aubainerie
- > **10** Bureau en Gros stores newly registered
- > Launch of **2** new work-study balance projects
- > **246** new businesses registered to the Équi T-É program²
- > Over **900** businesses registered with Montreal's Équi T-É program³

Partners of the Équi T-É program employer component:

Carrefours jeunesse-emploi Marquette, Pointe-aux-Trembles/Montréal-Est, and Sud-Ouest; Emploi-Québec; Forum Jeunesse de l'île de Montréal; Montreal Hooked on School; and Réunir Réussir

Montreal Hooked on School receives support from the following partners to implement this action:



NETWORK OF REGIONAL JOINT ACTION ORGANIZATIONS ON SCHOOL PERSEVERANCE AND SUCCESS

Every region of Québec has a regional joint action organization (instance régionale de concertation—IRC) that, like Montreal Hooked on School, supports stakeholder mobilization and partnerships aimed at encouraging school perseverance. Montreal Hooked on School plays an active role on IRC planning and coordination committees, which are a forum for discussing priorities for action related to school perseverance and for working on collective issues, including work-study balance and Hooked on School Days.

2013-2014 highlights

- > Participation on the network's coordination and planning committees
- > Contribution to efforts to develop an inter-regional plan to support the ministerial graduation-rate goal for 2020
- > Participation in the province-wide encouragement campaign that was part of Hooked on School Days
- > Contribution to the development of a self-assessment kit for work-study balance

COMMITTEES AND WORKING GROUPS

The success of actions aimed at increasing graduation rates depends on the participation and contribution of all levels of society, and joint action is an important aspect of this process. To promote cohesive strategies and information sharing among the various entities working toward school perseverance, Montreal Hooked on School sits on a number of committees and working groups.

¹ While this number is significantly higher than for previous years, because there were so many more ways to take part, it is impossible to accurately count the exact number of participants in Montreal's 4th HSD.

^{2,3} These actions are carried out by the Carrefours jeunesse-emploi Marquette, Pointe-aux-Trembles/Montréal-Est, and Sud-Ouest.

PRIORITY ACTION 3

Document, promote and disseminate information relevant to actions that encourage school perseverance and success.

DOCUMENTATION OF THE MONTREAL REALITY

In order to better understand school perseverance and success from a Montreal perspective and support actions adapted to the unique realities in each Montreal neighbourhood, Montreal Hooked on School documents the situation in Montreal related to the main school perseverance issues.

2013-2014 highlights

- > **Portraits of targeted areas**
Presentation of data related to the determinants of school perseverance to foster a shared vision of the issues in each neighbourhood.
 - Production of **2** situational reports
 - Production of **2** fact sheets
- > **Study of the work habits and lifestyles of young Montrealers**
Preparation of a study to be conducted among 3,000 Secondary 4 and 5 students to improve actions aimed at working students
 - Project in partnership with the Centre ÉCOBES and an advisory committee made up of school perseverance partners

PROMOTION AND DISSEMINATION OF INFORMATION

Montreal Hooked on School adopts ever more diverse dissemination strategies in order to foster a better understanding of school perseverance and success from a Montreal-specific perspective and to promote Montreal-based actions that support the success of youth. In 2013-2014, guided by the strategy set out in its new communication plan, Montreal Hooked on School intensified its efforts in this direction to further highlight the expertise of Montreal stakeholders.

2013-2014 highlights

- > **Promotion of Montreal-based actions and expertise**
 - **16** press releases, primarily during HSD
 - **68** interviews and media reports, primarily during HSD
 - **4** bilingual newsletters distributed to **2,321** recipients
 - Increased presence on social media
- > **Participation in the dissemination of the results of the Québec Survey of Child Development in Kindergarten**
 - Participation on the dissemination steering committee
 - Participation in relaying information
 - Contribution to the organization of two training sessions on using the data
 - Contribution of funding to the production of a video

SEMINARS, LECTURES AND PRESENTATIONS

Montreal Hooked on School's actions include information-sharing and networking activities that shed light on various issues related to school perseverance, that discuss possible solutions, and that support collective efforts among different sectors.

2013-2014 highlights

- > **Organisation of an activity for Destination 2030, a Québec tour of youth consultation**
Participation, through partnership with the Forum jeunesse de l'île de Montréal, in the Montreal component of the consultation aimed at developing a new Québec youth policy
 - 50 participants
 - Presentation, attended by Léo Bureau-Blouin, of Montreal Hooked on School's local action strategy based on characteristics specific to Montreal
- > **Organizational partner of the Grandes rencontres sur la persévérance scolaire (GRPS)**
With the theme "Agir tôt. Voir grand!" (Early action, far-reaching results) the 3rd GRPS meeting was an opportunity to consider the topic of school perseverance from the ages of 0 to 20.
 - **1,400** stakeholders working in early childhood education and school perseverance gathered at the Palais des congrès de Montréal
 - Member of the GRPS advisory committee, as well as the coordination, steering, programming, and communication committees
 - Member of the *Poursuivons le mouvement pour la persévérance scolaire* committee

GRPS production partners:



With support from:





PRIORITY ACTION 4

Improve evaluation strategies.

EVALUATION OF THE STRATEGY TO SUPPORT AND GUIDE LOCAL ACTION

Since 2012, the Évalécole team, led by professor Michel Janosz of Université de Montréal, has been assisting Montreal Hooked on School in measuring the effectiveness of its local action strategy. Divided into three components, the evaluation aims to analyze regional mobilization, local mobilization, and the impacts of certain initiatives supported by Montreal Hooked on School. In 2013–2014, Montreal Hooked on School submitted the report on the first evaluation component, which presents the status of regional mobilization. The communication of these results, mostly positive, was also an opportunity to listen to the expectations of Montreal Hooked on School's local and regional partners in order to enhance its model for action.

2013–2014 highlights

- > Submission of the evaluation report on regional mobilization
- > Event to communicate results and consult with partners
- > Collection of data for evaluation of local mobilization
- > Launch of impact assessment

FINANCIAL PARTNERS

Montreal Hooked on School's 2013–2014 actions were made possible with the help of our financial partners. We thank them for their support.

MEMBERS

Montreal Hooked on School is a regional organization comprising 32 members from different sectors, all dedicated to working together and determined to keep young people at the centre of their efforts.

Together, they are committed to developing partnership projects to enhance the reach and impact of actions that encourage school perseverance and success, and reconnecting with school.



Montreal
Hooked on School

417 Saint-Pierre Street, Suite 401
Montreal, QC
H2Y 2M4
T. 514-286-2346
F. 514-286-2347
www.researeussitemontreal.ca

Proud partner of Montreal Hooked on School



EDUCATIONAL SECTOR



- > Association montréalaise des directions d'établissement scolaire (AMDES)
- > Association of Montreal School Administrators
- > Fédération autonome de l'enseignement
- > Montreal Teachers Association

HIGHER EDUCATION SECTOR

- > McGill University
- > Regroupement des collèges du Montréal métropolitain (RCMM)
- > Université du Québec à Montréal

COMMUNITY SECTOR

- > Institut de coopération pour l'éducation des adultes (ICÉA)
- > Regroupement des organismes communautaires québécois de lutte au décrochage (ROCQLD)
- > Table des Carrefours jeunesse-emploi de l'Île-de-Montréal
- > The YMCAs of Québec

INSTITUTIONAL SECTOR

- > Agence de la santé et des services sociaux de Montréal
- > Comité de gestion de la taxe scolaire de l'île de Montréal
- > Conférence régionale des élus de Montréal
- > Conseil régional des partenaires du marché du travail
- > Emploi-Québec
- > Forum jeunesse de l'île de Montréal
- > Ministère de l'Éducation, du Loisir et du Sport
- > Ministère de l'Immigration, de la Diversité et de l'Inclusion
- > Ministère de la Famille
- > Service de police de la Ville de Montréal
- > Ville de Montréal

BUSINESS SECTOR

- > Board of Trade of Metropolitan Montreal
- > Centraide of Greater Montreal
- > Drakkar & Partners
- > Fondation de lutte au décrochage scolaire

GUESTS

- > Table de concertation des organismes au service des personnes réfugiées et immigrantes (TCRI)

OBSERVERS

- > Engagement jeunesse