



2015-2016 ANNUAL REPORT

**TAKING ACTION TO
PROMOTE SCHOOL
PERSEVERANCE
AND SUCCESS**



Montreal
Hooked on School

INFORMATION TO FOSTER ACTION ON MONTREAL'S SCHOOL PERSEVERANCE ISSUES

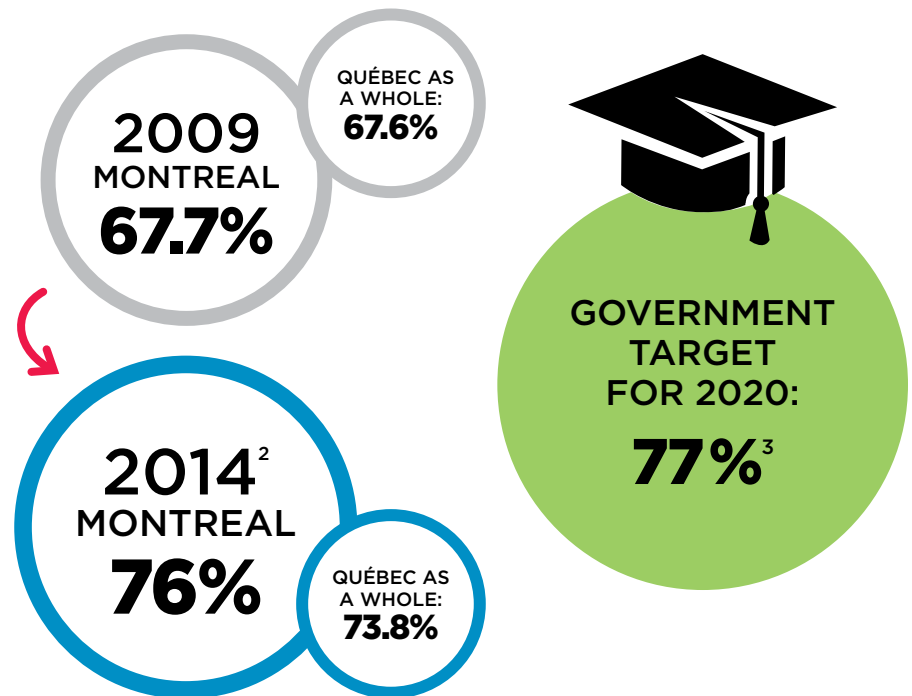
One of Montreal Hooked on School's priorities for action is to document the situation in Montreal in order to create a better understanding of the main issues related to school perseverance and success and to support stakeholders in implementing actions adapted to the realities faced by young Montrealers.

Below is an overview of this situation and several of the related issues.

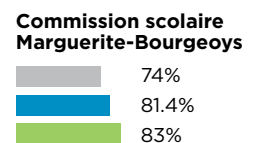
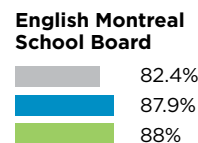
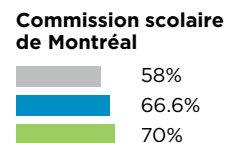
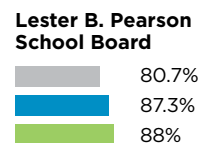
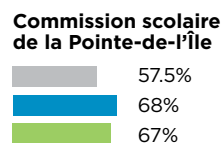


GRADUATION RATE CONTINUES TO RISE!

More and more young Montrealers¹ are getting their first diploma before the age of 20.



Rate of high school graduation before the age of 20 and government targets for the five Island of Montreal school boards.



Graduation rate ● 2009 ● 2014 Government target ● 2020

Fewer young Montrealers¹ are dropping out before getting their first diploma.

2009
24.6%

2013² 20.8%
Girls: 17.6%
Boys: 23.9%

¹In the public system
²Latest data available at time of publication
³For the public system



CHARACTERISTICS OF THE SITUATION IN MONTREAL

Each of the characteristics below have a specific effect on how action to promote school perseverance in Montreal is carried out.

High dropout rate

> **20.8%** in Montreal, versus 17.8% for Québec as a whole.

High poverty rate

> Of the elementary school students in Québec living in the most underprivileged environments, **nearly 84%** are in Montreal.

High population density

> **26%** of Québec's dropouts are from Montreal.

High number of students with immigrant backgrounds, making school the focal point of integration for new arrivals from different cultures.

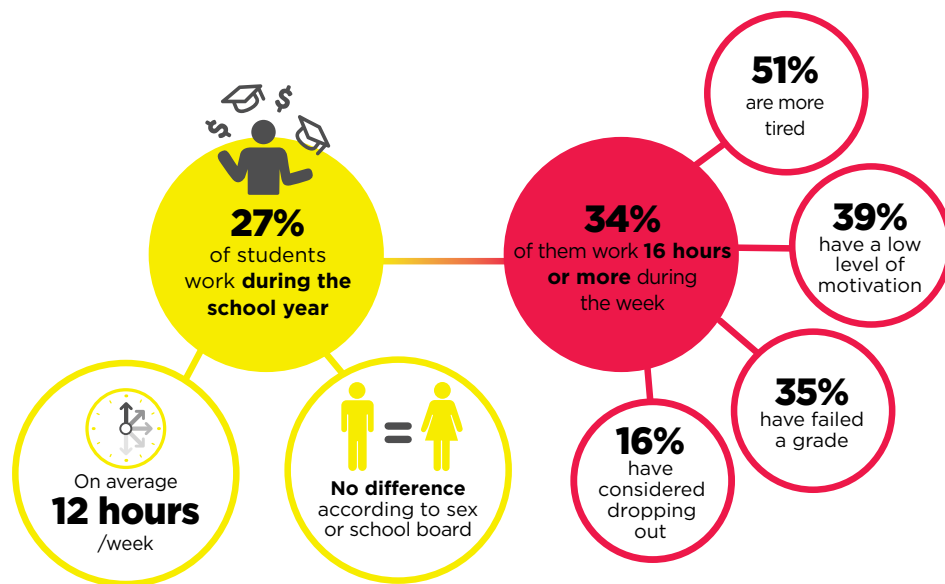
> **62.2%** of students registered in Montreal's public school system have immigrant backgrounds.

Not to mention...

- > Changing realities from one neighbourhood to another.
- > A significant number of isolated families who have trouble accessing the services they need.
- > A high number of school perseverance stakeholders, necessitating considerable coordination to ensure concerted action.

WORK/SCHOOL BALANCE: AN MHS SURVEY OF FRENCH-SPEAKING STUDENTS IN SECONDARY 4 AND 5

Although it is known that there are several advantages to working while going to school, too many hours spent at work can be detrimental to school perseverance.



GENDER EQUALITY AND SCHOOL PERSEVERANCE: A STRATEGY TO COUNTER THE DROPOUT PROBLEM

Among both girls and boys, there is a correlation between gender stereotypes and dropping out of school.

We all have different attitudes and expectations (often unconscious) of children depending on their sex.

Children internalize this different socialization, which in turn reinforces gender stereotypes.

The boys and girls who appropriate these stereotypes most deeply are also those who drop out most frequently.

Sources: Ministère de l'Éducation et de l'Enseignement supérieur, *Diplomation et qualification par commission scolaire au secondaire*, 2011 and 2015 editions; ministère de l'Éducation et de l'Enseignement supérieur, Direction des statistiques et de l'information décisionnelle, information portal, Charlemagne system, data from November 2010 and November 2014; Centre ÉCOBES, *La conciliation études-travail chez les élèves francophones montréalais de 4^e et 5^e années du secondaire*, 2015; Complice - Persévérance scolaire Gaspésie-Les îles and Montreal Hooked on School, *Persévérer dans l'égalité!*, 2016; ministère de l'Éducation et de l'Enseignement supérieur, *Supporting Montréal Schools Program*, 2009; Comité de gestion de la taxe scolaire de l'île de Montréal, *Portrait socioculturel des élèves inscrits dans les écoles publiques de l'île de Montréal - Inscriptions au 14 novembre 2014*, 2015.



2015–2016 OVERVIEW

HIGHLIGHTS

Although 2015–2016 was marked with changes and uncertainty, Montreal Hooked on School continued to demonstrate its importance as an agent of dialogue in gathering and mobilizing Montreal's key figures around the issue of school perseverance, in fostering joint action, and in disseminating information that builds the capacity of stakeholders to act.

REFINEMENT OF THE MHS MODEL FOR ACTION

In 2015–2016, under the leadership of its members, MHS and its partners undertook to determine the organization's framework of action in the light of recent assessment efforts and changes taking place in the area of school perseverance.

- > Consultations on the MHS model for action
- > Clarification of MHS's logical framework
- > Initiation of work on the 2017–2020 strategic plan

REINVESTMENT BY QUÉBEC GOVERNMENT

In 2016, the Québec government confirmed a \$2.8 million investment in Montreal Hooked on School initiatives, thereby reaffirming its confidence in MHS's ability to mobilize Montreal society and to elicit school-focused engagement in school perseverance from organizations in all sectors.

- > Announcement of a **\$2.8 million** investment to support MHS initiatives
- > Adjustment of funding mechanisms in targeted areas in order to meet new requirements of the ministère de l'Éducation et de l'Enseignement supérieur
- > Participation on the ministerial and regional consulting authority steering committee for implementing the actions related to the investment

HOOKED ON SCHOOL DAYS (HSD) (PAGE 14)

For a sixth consecutive year, Montreal's HSD activities gave young people a huge boost of encouragement, recognized their efforts, and celebrated the people who support them on the road to success. HSD 2016 also featured a partnership with the Lucie and André Chagnon Foundation, which provided major funding for the event.

- > **1,045** activities on the HSD calendar, from 350 organizations
- > **400** students visited by inspiring speakers from HSD Squad
- > **30,000** ribbons worn, in addition to hundreds of ribbons drawn and made in arts and crafts activities
- > **140** participants at the Montreal launch.
- > **1** Québec-wide campaign: "Be a Superhero"

ADOPT A SCHOOL (PAGE 12)

The Adopt a School movement is an incubator of innovative pedagogical initiatives aimed at improving the school perseverance and success of Montreal's young people. With partners from different sectors, the movement acts as a catalyst to unite key figures in Montreal in supporting its elementary and high schools.

- > **7** large-scale projects in **16** schools
- > **1,200** students benefiting from direct intervention in various projects
- > Over **25** partners involved in projects

WORK/SCHOOL BALANCE (PAGE 17)

MHS has been involved in this determinant of school perseverance for many years. After commissioning a large study on the work and life habits of young Montrealers in 2015, MHS this year took part in characterizing the resulting data. Subsequently, a number of strategies were implemented to distribute and incorporate the results in order to foster a better understanding of the realities faced by working students.

(Project undertaken in collaboration with the Centre ÉCOBES and an advisory committee made up of school perseverance partners, with the participation of the three French-speaking school boards on the Island of Montreal.)

- > Analysis of data from a survey of **2,000** students (secondary 4 and 5) and characterization with the Centre ÉCOBES
- > Presentation on work/school balance with nearly **100** attendees
- > Creation of a page on the MHS website presenting the survey highlights and means to disseminate the results
- > Support for integrating the survey results and using the *JeConcilie.com* website offered to over **110** school perseverance stakeholders and partners

GENDER EQUALITY AND SCHOOL PERSEVERANCE (PAGE 18)

MHS took part in developing and disseminating the guide *Persévérer dans l'égalité!*, which provides key information and courses of action to prevent the formation and internalization of sexual stereotypes in order to improve the effectiveness of school perseverance initiatives for boys and girls.

(Project carried out in collaboration with Complice - Persévérance scolaire Gaspésie-Les Îles and in partnership with the Table de Concertation des groupes de femmes Gaspésie—Îles-de-la-Madeleine [TCGF - GfM], with support from the Secrétariat à la condition féminine.)

- > Development of the guide ***Persévérer dans l'égalité!***
- > Partner in offering **65** hours of training for **129** people
- > Launch of the guide at a breakfast seminar on gender equality and school perseverance, attended by **70** guests
- > Distribution of **230** guides to organizations in all sectors

MHS WEBSITE (PAGE 19)

In 2015–2016, MHS launched its new website, which provides easy access to the latest information on school perseverance and success with a Montreal outlook.

- > Presentation of data and plain-language information on issues related to school perseverance in Montreal
- > Development of key school perseverance topics such as work/school balance, gender equality, and literacy
- > Enhanced portraits of the neighbourhoods where MHS focuses its actions
- > Highlighting of inspiring projects and courses of action

DOCUMENTATION, PROMOTION, AND DISSEMINATION OF INFORMATION (PAGE 20)

Through these efforts, MHS aims to foster a better understanding of school perseverance and success in Montreal, better equip stakeholders in planning and implementing their actions, and highlight the endeavours in Montreal to support the success of young people.

- > Organization of two presentations and numerous meetings to foster the appropriation of knowledge
- > Development of a guide containing information and resources, and participation in the production of a survey report
- > Development of a fact sheet on the situation in Montreal
- > Distribution of press releases and conducting interviews
- > Publication of a newsletter
- > Development of information pages about school perseverance on the MHS website
- > Dissemination of information at committee meetings

MHS: MOBILIZATION & COORDINATION

One of the primary roles of MHS is to gather key Montreal figures around school perseverance issues and promote partnerships between schools and community stakeholders to implement youth-focused projects. Among its actions, MHS:

- > Supports joint projects in targeted areas (page 7)
- > Promotes the creation of ties between schools and different sectors (pages 8 and 15)
- > Coordinates Montreal's participation in Hooked on School Days (page 14)
- > Guides emergent literacy committees in maintaining a community of practice (page 13)
- > Documents and distributes information that provides a better understanding of the issues surrounding school perseverance in Montreal and brings partners together around key topics (page 17)



MESSAGE FROM THE BOARD OF TRUSTEES AND EXECUTIVE DIRECTOR

Dear reader,

While this report takes stock of a year filled with changes and uncertainty, it is one that we are especially proud to present, as it paints a picture of an organization that is committed, determined, and still very necessary.

To put the accomplishments of 2015-2016 in perspective, it is first necessary to stress the extent to which the difficulties of the past year challenged MHS's capacity to effectively carry out some of its activities. However, it was during this uncertainty that the strength of Montreal's mobilization showed its true force, by continuing joint efforts to refocus on objectives that would improve the success of young people. In this way, 2015-2016 saw MHS's members and partners working to reframe the organization's model of action in order to better meet Montrealers' school perseverance needs, thereby reconfirming the importance of MHS in bringing stakeholders together to take action.

While the engagement of MHS's partners allowed us to continue forward, it is the support of our funders who made it possible for us to maintain some of our activities over the past year. In particular, we wish to thank the five Island of Montreal School boards and the Lucie and André Chagnon Foundation, who believed in the importance of continuing the work that has been done already and who have shown themselves to be leading partners in implementing community-based school perseverance actions.

We also wish to highlight the essential contribution of the ministère de l'Éducation et de l'Enseignement supérieur, which renewed its support of Québec regional consulting authorities through a \$12.8 million investment. In addition to signifying the government's desire to bring together all stakeholders able to contribute to the development of young people, it is a recognition of Montreal Hooked on School's ability to assemble key figures around the issue of school perseverance and to foster the implementation of joint actions that benefit youth and their families.

However, among all the highlights of 2015-2016, the most important was the recommitment of partner mobilization toward achieving and surpassing the government's graduation-rate target. The collective effort of all these stakeholders unquestionably brings about significant change, and it is therefore as participants in this commitment to the success of young people that MHS has found renewed momentum to continue its activities and undertake new challenges.



Pierre Boulay

First Vice-chair, Board of Trustees
Montreal Hooked on School

Director General
Commission scolaire de la Pointe-de-l'Île



Andrée Mayer-Périard

Executive Director
Montreal Hooked on School

Priority for action 1

SUPPORT ACTION IN THE ISLAND OF MONTREAL'S MOST SENSITIVE AREAS, FOCUSING ON SPECIFIC TERRITORIES

SUPPORT AND GUIDANCE FOR LOCAL ACTION

Supporting joint action in the most sensitive areas on the Island of Montreal is one of the main focuses of Montreal Hooked on School's action.

The model used in targeted areas is unique, since it is closely tied to local realities and to priorities set by local schools to meet the needs of at-risk youth. The approach thus ensures that the community and its schools coordinate their action through partnership projects that focus on the needs of youth. Through such associations,

efforts can be initiated, continued, and combined to foster consistency of actions aimed at school perseverance locally.

This process requires sustained coordination and occurs thanks to the leadership shown by the five school boards that steer these efforts in each targeted area, with the backing of Montreal Hooked on School.

SCHOOL-FOCUSED MOBILIZATION

The action plans in targeted areas involve a wide array of local organizations, who mobilize around schools to undertake actions in partnership with the education sector.



The 11 targeted areas, associated with the five Island of Montreal school boards, are:

- 1 Centre-Sud**
Commission scolaire de Montréal
- 2 Hochelaga-Maisonneuve**
Commission scolaire de Montréal
- 3 LaSalle**
Lester B. Pearson School Board
Commission scolaire Marguerite-Bourgeoys
- 4 Montréal-Nord**
Commission scolaire de la Pointe-de-l'Île
English Montreal School Board
- 5 Pierrefonds**
Lester B. Pearson School Board
Commission scolaire Marguerite-Bourgeoys
- 6 Pointe-aux-Trembles**
Commission scolaire de la Pointe-de-l'Île
- 7 Rivière-des-Prairies**
Commission scolaire de la Pointe-de-l'Île
- 8 Saint-Laurent**
Commission scolaire Marguerite-Bourgeoys
- 9 Saint-Léonard**
Commission scolaire de la Pointe-de-l'Île
- 10 Saint-Michel**
Commission scolaire de Montréal
English Montreal School Board
- 11 Sud-Ouest**
Commission scolaire de Montréal
English Montreal School Board

All information about targeted areas can be found at
www.reseauseussitemontreal.ca

HIGHLIGHTS

Because of its financial situation, Montreal Hooked on School had to modify its support to targeted areas in the last year. Thus, in 2015-2016, MHS prioritized the continuation of projects already underway, with an intensity that varied depending on the state of mobilization in each area.

- > Support for the implementation of **38 initiatives** that reached **6,746 children, students, and parents** in **63.7%** of Montreal's disadvantaged areas
- > Support and guidance provided to **11 territories** and one youth support program in Lachine
- > Investment of **\$590,176**

Montreal Hooked on School receives support from the following partners to implement its local action strategy:





In 2015–2016, the action plans of targeted areas affected:

MHS IN THE TARGETED AREAS

To promote school-focused mobilization of stakeholders and support the implementation of joint-action plans, Montreal Hooked on School:

- > Fosters coordination between schools and the community
- > Facilitates the pooling of expertise and practices from different sectors
- > Takes part in carrying out activities set out in action plans
- > Participates in meetings related to local efforts
- > Supports partnership efforts according to local needs
- > Documents and distributes information about the realities faced by each targeted area

MHS's contributions to targeted areas

- > Participation as needed in various local joint efforts in targeted areas
- > Support for the school perseverance component of LaSalle's social development project
- > Collaboration in the Rendez-vous de Montréal-Nord Priorité jeunesse
- > Participation in planning and coordination work of the Regroupement écoles et milieux en santé de Montréal-Nord
- > *Persévérer dans l'égalité* course (gender equality training) for organizations in four targeted areas
- > Support for development of the communication strategy of the Comité citoyen pour la valorisation de l'éducation à Pointe-aux-Trembles
- > Guidance for Antoine-de-Saint-Exupéry school in building partnerships
- > Contribution to documentation of the Forum en développement social de Saint-Léonard
- > Support for joint efforts targeting Saint-Michel's priority of success in education, qualification, and employment

INVESTMENT IN PREVENTION

MHS analyzes the projects it supports according to the type of intervention targeted. Over the years, we have noticed an increase in initiatives aimed at youth with one or more risk factors for dropping out.

Funding intensity by intervention type

	Awareness	Universal prevention	Targeted prevention	Reconnection with school
2013 2014	11%	41%	44%	4%
2014 2015	10%	35%	50%	4%
2015 2016	0%	26%	73%	1%



65

schools in the five Island of Montreal school boards

45

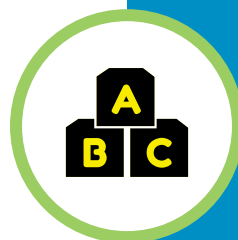
elementary schools

20

high schools

1

adult education centre



41

children 0 to 5 years

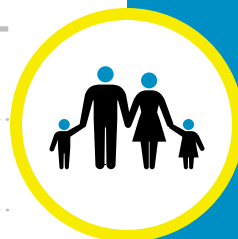
- Early stimulation
- Preparation for kindergarten
- Emergent literacy



5,115

students

- Grades
- School engagement and motivation
- Sense of belonging at school
- Self-esteem
- School-family-community
- Career aspirations



1,590

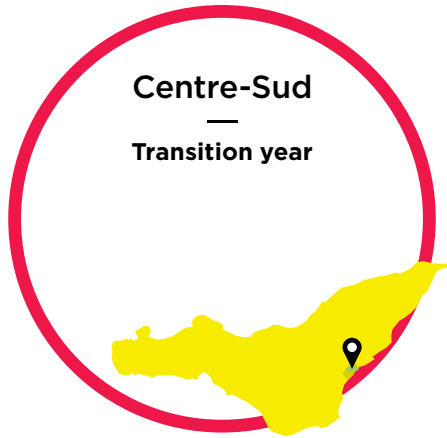
parents

- Parental skills and practices

⁴ Zones that, according to the *Carte de la défavorisation 2013* of the Comité de gestion de la taxe scolaire de l'île de Montréal, are highly disadvantaged.

63.7% of Montreal's disadvantaged areas⁴

OVERVIEW OF TARGETED AREAS



OVERVIEW

The Centre-Sud faces numerous recurring challenges, including higher-than-average poverty among families compared with Montreal as a whole and high levels of vulnerability among children in some sectors. Another issue is the low value placed on education and the fact that a majority of high school students drop out before earning a diploma or qualification.

HIGHLIGHTS

- > Continuation of four projects from the action plan, with various implementation proposals and financial support from partners
- > Setting of priorities of action for 2016-2017

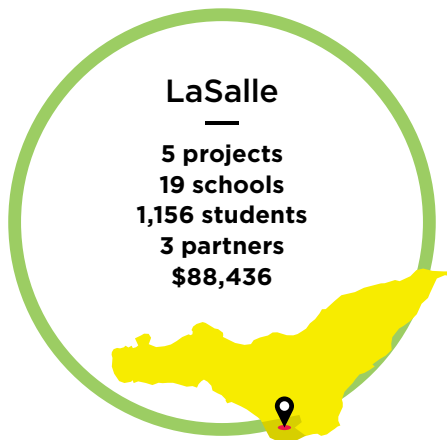


OVERVIEW

Numerous factors require special attention in Hochelaga-Maisonneuve, including the high levels of socioeconomic disadvantage, high rates of vulnerability among children, and a dropout rate of over two students in five.

HIGHLIGHTS

- > Started the process of setting action priorities for 2016-2017



OVERVIEW

LaSalle faces many issues, notably a high rate of vulnerability among preschoolers and a student population made up predominantly of students with immigrant backgrounds, which requires special support to facilitate their integration into the school system.

HIGHLIGHTS

- > Expansion of partnership with McGill University to add a musical component to the Homework Zone (LBPSB)
- > Safety award and title of team captain obtained by Cavalier-De-LaSalle high school in the finals of Youth Fusion's 2016 robotics festival (CSMB)
- > Sustainable entrepreneurship fair held as part of the welcome event of Cavalier-De-LaSalle's elementary-high school transition program, in partnership with the Carrefour jeunesse-emploi LaSalle (CSMB)

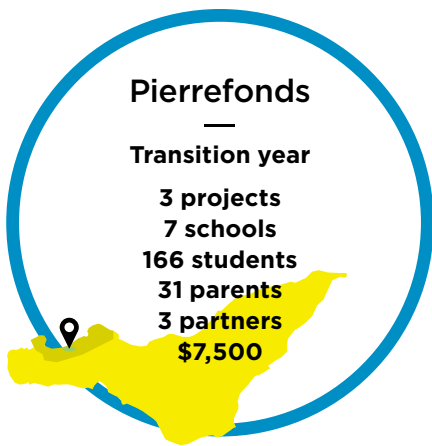


OVERVIEW

Among Montréal-Nord's challenges are the considerable poverty level among families, the high proportion of mothers without diplomas, and the significant number of single-parent families. In addition, the area is highly multiethnic, which is reflected in the elementary and high school populations.

HIGHLIGHTS

- > Strengthening of school-family-community ties thanks to the work of three partnership agents (CSPI)
- > Broadcast of over 30 radio programs to enliven high school community life (CSPI)
- > Mentorship in career exploration provided to 120 students (EMSB)

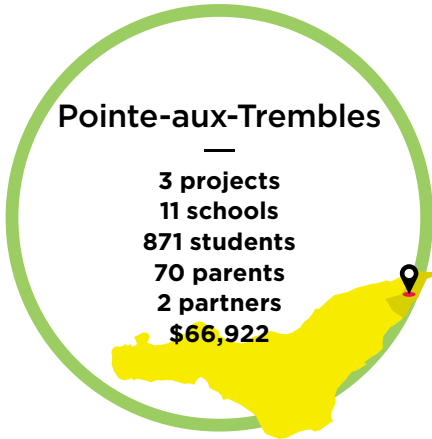


OVERVIEW

Other than high poverty levels in certain sectors, Pierrefonds has a high rate of child vulnerability. The area is also home to among the highest number of families on the island.

HIGHLIGHTS

- > Start of the process of setting action priorities for 2016-2017 (CSMB)
- > Continuation of the Born to Read program, which builds ties among parents and uses teacher observations to improve student integration (LBPSB)



OVERVIEW

Pointe-aux-Trembles faces a number of challenges, including the value placed on education. The area's socioeconomic conditions mean that over half of the schools are located in disadvantaged areas. The area also has a high rate of child vulnerability.

HIGHLIGHTS

- > COCIVALE meeting to present the yearly overview of how school perseverance has progressed
- > Evaluation of partnership agents shows the positive effects on the elementary-high school transition
- > FIRST Lego League prize won by Belle-Rive school at the 2016 robotics festival

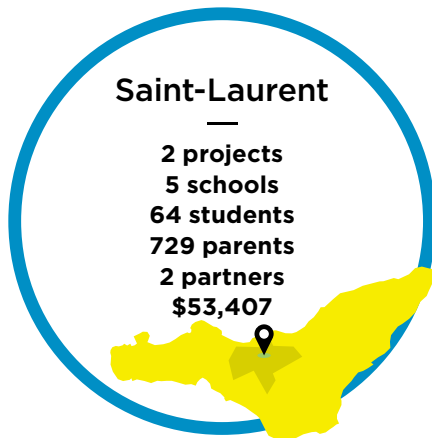


OVERVIEW

Rivière-des-Prairies has several pockets of poverty, a high rate of children vulnerable in at least one developmental domain, and a significant majority of students with immigrant backgrounds who face integration challenges.

HIGHLIGHTS

- > Broad campaign promoting the importance of feeling safe at school, as part of the *Jeunes citoyens responsables* program



OVERVIEW

Saint-Laurent faces a number of issues, including a high rate of child vulnerability and a very high majority of students with immigrant backgrounds who require integration support. Nearly one in three students in Saint-Laurent drops out of school.

HIGHLIGHTS

- > Presentation of youth services by community organizations at Saint-Laurent high school
- > Team Spirit/Partnership award won by Jean-Grou school at Youth Fusion's robotics festival

Saint-Léonard

2 projects
4 schools
668 students
480 parents
2 partners
\$64,881



OVERVIEW

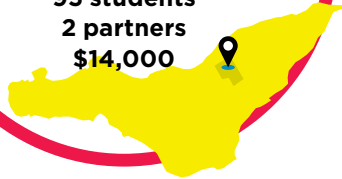
Saint-Léonard has undergone considerable change over the past 10 years. For instance, the vast majority of students in area schools are now from immigrant backgrounds. In addition, the rapid rise in the number of children in the area has doubled the number of students in some schools.

HIGHLIGHTS

- > Prioritization of school perseverance in the program of the local social development forum
- > Organization of a *Magasin-Partage de la rentrée scolaire* event (over 70 local participating families)
- > Production of the documentary *Le café l'Entre 2 - Une coopérative*, which won the jury prize at the *Coopérer, c'est faire ensemble!* competition

Saint-Michel

Transition year
2 projects
1 school
95 students
2 partners
\$14,000



OVERVIEW

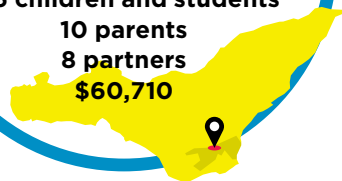
Saint-Michel is highly multiethnic and has a considerable level of socioeconomic disadvantage among families. One mother in four lacks a diploma, certificate, or qualification. In some area schools, nearly half the students drop out.

HIGHLIGHTS

- > Planning and setting of action priorities for 2016-2017 (CSDM)
- > Best Artistic Direction prize won by John F. Kennedy High School at the 2016 CLIP awards (EMSB)

Sud-Ouest

Transition year
9 projects
1 school
176 children and students
10 parents
8 partners
\$60,710



OVERVIEW

The Sud-Ouest faces a number of risk factors. Most of the community's schools are located in disadvantaged areas. There is also a low graduation rate, both among mothers and young people, and the dropout rate among girls is particularly high.

HIGHLIGHTS

- > Starting of the process of setting action priorities for 2016-2017 (CSDM)
- > Organization of the JL Up Next festival, which features student creations and collaborations with the urban art community (EMSB)

YOUTH SUPPORT PROGRAM IN LACHINE

The Lachine Pathways to Education program, shepherded by Carrefour jeunesse-emploi Marquette, aims to prevent students from systematically dropping out of school in the Duff-Court neighbourhood, where the dropout rate is as high as 50 percent. Implemented during the 2014-2015 school year, the program is offered to youth living in the neighbourhood who present different risk factors for dropping out. To help them graduate from high school, youth registered in the program receive multi-dimensional guidance and support (educational, social, individualized, and financial) throughout their high school studies.

An initiative of:



Pathways
to Education

With the support of:

Québec

HIGHLIGHTS

- > **70 youth** are taking part in the project in 2015-2016.
- > **100% retention rate:** All 35 students in the program last year returned this year.
- > **93%** of students achieved the minimal participation rate, and half the students surpassed the minimum expected rate.
- > A parent committee was started to support parental engagement in the educational success of the most at-risk students. **70 parents** participated on this committee.

THE ADOPT A SCHOOL MOVEMENT

Created as part of *Je vois Mtl* by Montreal Hooked on School, in partnership with Youth Fusion, the Adopt a School movement is an incubator for innovative teaching initiatives aimed at improving the school perseverance and success of Montreal youth. With the participation of universities, CEGEPs, the business sector, community organizations, and public-sector institutions, the movement strives to be a catalyst in uniting key players in Montreal around elementary and high schools. Various partners who understand the importance of investing in youth work together with school administrations, teachers, and professionals to enrich school environments and give all children a chance to experience success in their day-to-day lives.



HIGHLIGHTS

- > **7 large-scale projects** developed and implemented in **16 schools**
- > **6 neighbourhoods** affected by projects: LaSalle, Lachine, Saint-Henri, Pointe-Saint-Charles, Centre-Sud and Montréal-Nord
- > **1,200 youth** benefiting from direct intervention
- > Over **25 partners** involved in projects
- > MHS provides varying degrees of **assistance** depending on each project's needs: project coordination, partner mobilization, project documentation, fundraising, etc.

ADOPT A SCHOOL PROJECTS INITIATED SINCE THE START OF JE VOIS MTL*

Creation of a broad educational community

—
Network of elementary schools in LaSalle
 LaSalle (CSMB)

- > Taking the form of a community clinic, the community of care was designed based on an assessment of students' needs and has various components: screening of kindergarten and cycle-one elementary students, prevention activities, targeted interventions, and knowledge transfer to school staff.

> **Principal partner:**



> **Partners:**

Société de transport de Montréal,
 Cégep André-Laurendeau

Racine Carrée, an urban agriculture initiative

—
Martin-Bélanger and Jardin-des-Saint-Anges elementary schools
 Lachine (CSMB)

- > Implementation of an urban agriculture project shaped by the needs and objectives of each participating school. The project gives students a chance to help build greenhouses and learn entrepreneurial skills, with a view to selling vegetables.

> **Principal partners:**



Urban arts, inspired minds

—
James Lyng High School
 Saint-Henri (EMSB)

- > Integration of urban arts into the school curriculum in order to increase the motivation of students, who show a marked interest in urban arts. Music, writing, graffiti, and dance are used as teaching tools in various subjects.

> **Principal partner:**



> **Partners:**

W.O.R.D. (Writing Our Rhymes Down)
 Mobilys

Embracing Fine Arts in an Elementary Inner City School

—
Saint-Gabriel Elementary School
 Pointe-Saint-Charles (EMSB)

- > Project aimed at developing the school's vocation by integrating new aspects into its fine arts program (music, plastic arts, visual arts) and by acquiring new musical instruments for students to use.

> **Principal partners:**



*The projects presented here have received support over the past year. Note: L'extension, an inter-faculty centre for pedagogical and health support run by the Université de Montréal Faculty of Education, is also part of the Adopt a School movement, though it has not received support specifically from MHS.

Prevention program in reading and writing

Champlain elementary school
Centre-Sud (CSDM)

> Project aimed at designing and implementing a broad prevention and intervention program in order to foster educational success. The program, which will start next fall, has three main themes: prevention in reading and writing, health and well-being, and arts and sciences.

> Principal partner:



> Partners:

Orchestre Métropolitain, Télé-Québec, Collège de Maisonneuve

Music pre-kindergarten/ kindergarten (OSM)

Saint-Rémi elementary school (annexe)
Montréal-Nord (CSPI)

> This intensive music program for the school's pre-kindergarten and kindergarten students will start in September 2016, following major renovations to build the needed space. The project will be evaluated by a multi-disciplinary team of Université de Montréal researchers in order to assess the beneficial effects of learning music on children's cognitive skills.

> Principal partners:



> Partners:

Solflex, LineaP, Mercor, Pomerleau

Motor skills development program for four-year-olds in kindergarten

Jardin-des-Saints-Anges school
Lachine (CSMB)

> This project aims to create a physical education course for the school's four-year-old kindergarten students in order to help develop their motor skills. The course will be given by the school's physical education teacher.

> Principal partner:



The implementation of Adopt a School is made possible thanks to the collaboration of the following partners:



GUIDANCE FOR EMERGENT LITERACY COMMITTEES

It has been shown that poor grades, especially in reading, writing, and mathematics, are linked to a high likelihood of dropping out of high school. This is why MHS has made it a topic of priority action.

In the spring of 2015, the ministère de l'Éducation decided to end the province's emergent literacy assistance program (Programme d'aide à l'éveil à la lecture et à l'écriture—PAÉLÉ), under which MHS guided local stakeholders in starting or continuing emergent literacy activities. Although this mandate has ended, it is unthinkable that MHS withdraw its involvement in mobilization around a protection factor as important as reading. So while MHS has remained highly active on various committees, it has had to refocus its role around actions that facilitate the sharing of best practices in the field of emergent literacy.

HIGHLIGHTS

- > Redefinition of MHS's role following the end of the PAÉLÉ.
- > Participation in maintaining a community of practice that promotes communication among the committees, thanks to the engagement of local emergent literacy coordinators.
- > Representation among potential funders to ensure support for the work planned by communities of practice.
- > Assumption of responsibility for the emergent literacy program at Horizon 0-5.
- > Liaison with the ministère de l'Éducation et de l'Enseignement supérieur to ensure transmission of information.
- > Development and production of a website to assemble information, tools, and resources related to emergent literacy.



In 2015–2016, emergent literacy committees collectively adopted a new name (les zÉLÉS), which better reflects their mission and determination. Visit www.leszeles.ca this fall.

Priority for action 2

FOSTER CONNECTIONS AMONG ALL PARTNERS AND THE COMMUNITY, AS WELL AS THE COHESION OF ACTIONS TO PROMOTE SCHOOL PERSEVERANCE AND SUCCESS

HOOKED ON SCHOOL DAYS (HSD)

During HSD 2016, over 1,045 activities related to school perseverance were held in Montreal from February 15 to 19. These activities gave youth a huge dose of encouragement, recognized their efforts, and celebrated everyone who supports them on the road to success. This year, the Québec-wide theme “Be a Superhero” was used to recognize and acknowledge the thousands of school perseverance superheroes who make a difference in the educational experience of so many young people. **Montreal Hooked on School is extremely proud to have coordinated Hooked on School Days in Montreal since 2011, when HSD was first launched here.**



Photo: Sylvain Légaré



Photo: Sylvain Légaré



For more information: www.jembarque.ca

HIGHLIGHTS

- > **1,045 activities** registered on the calendar, carried out by **350 organisations**
- > **30,000 ribbons** worn, in addition to hundreds of others drawn and made in arts and crafts activities
- > Numerous **press releases, newsletters, Facebook and Twitter updates** distributed by MHS and hundreds of Montreal organizations
- > A number of **short videos** produced to acknowledge school perseverance superheroes
- > **32 elected** officials from Montreal together in an all-party photograph for school perseverance
- > **400 students** in high school and general adult education classes visited by inspiring speakers from the **HSD Squad** (now in its 4th year) who have reconnected with school
- > **40 flags** with the image of the green-and-white ribbon raised in libraries, on the balcony of Montreal's city hall, and at many borough and town halls
- > **140 people** from all sectors in attendance to kick off the week of HSD 2016
- > **1 Québec-wide** campaign: “Be a Superhero”



Montreal Hooked on School received support from the following partners to implement this action:



Coopérer pour créer l'avenir

COMMITTEES AND WORKING GROUPS

The success of actions aimed at increasing the graduation rate relies on the participation of all segments of society, and an effective strategy for tackling a problem as complex as youth dropping out of school is to encourage a broad range of stakeholders to work together. To promote cohesive strategies, build stakeholders' capacity for action, and encourage information sharing among these various entities, Montreal Hooked on School sits on a number of committees and working groups.

MHS's participation in these groups takes various forms, and its contributions vary based on its own capacities and on the needs expressed by partners. Hence, as needed, MHS will:

- > assist or take charge of the committee
- > disseminate information
- > contribute to various areas of work
- > foster ties among stakeholders
- > provide expert support on a case-by-case basis
- > mobilize partners
- > help to set priorities based on the specific nature of school perseverance in Montreal
- > etc.

Committees are also an opportunity to gather partners around topics related to Montreal-based action on school perseverance, as evidenced by the overview of activities to document, promote and disseminate information (see page 17).



REGIONAL AND INTERREGIONAL COMMITTEES

- > Concertation Montréal's "Collège d'affinité" on education, knowledge, science, technology, and research
- > Regional emergent literacy committee (Programme d'aide à l'éveil à la lecture et à l'écriture—PAÉLÉ)
- > Advisory committee for the Joint Project on School Perseverance: Intervention Issues and Perspectives for Girls and Boys
- > Board of directors of the Fondation de lutte au décrochage scolaire de Montréal
- > Working committee on school perseverance of the Centre jeunesse de Montréal - Institut universitaire
- > Regional social development forum for the Island of Montreal (and the "communicate social development working committee")
- > Working committee on Montreal Hooked on School's logical framework
- > Groupe d'action sur la persévérance et la réussite scolaires au Québec (and two sub-committees)
- > Committee for the mobilization of the business sector
- > Horizon 0-5
 - Regional Committee
 - Transition to school working group
 - Emergent literacy working group
- > Regroupement ICS Montréal
- > Network of regional consulting authorities on student retention and educational success
 - Coordination committee
 - Provincial working group on work/school balance
 - Hooked on School Days 2016 communication committee

LOCAL COMMITTEES

As part of its local efforts, Montreal Hooked on School sits on a number of local committees. MHS's presence at these meetings is based on the need of the individual neighbourhoods. The frequency of participation thus varies from territory to territory.

Hochelaga-Maisonneuve

- > Neighbourhood approach coordination committee - Hochelaga-Maisonneuve
- > Education committee (Table de quartier Hochelaga-Maisonneuve)

Montréal-Nord

- > Coordination committee of the Regroupement écoles et milieux en santé

Pierrefonds

- > Table jeunesse de l'Ouest-de-l'Île de Montréal
- > Table de quartier du Nord-Ouest-de-l'Île de Montréal
- > Concertation Ouest-de-l'Île
- > Table de concertation enfance-famille-jeunesse de l'Ouest-de-l'Île

Pointe-aux-Trembles

- > Comité citoyen pour la valorisation de l'éducation (COCIVALE)
- > COCIVALE communication sub-committee

Rivière-des-Prairies

- > Table de concert'Action jeunesse 12-35 ans
- > Intertable jeunesse 6-11 ans et 12-35 ans

Saint-Laurent

- > Comité jeunesse 6-12 de Saint-Laurent (by invitation)
- > Comité jeunesse 12-25 de Saint-Laurent (by invitation)
- > Comité petite enfance de Saint-Laurent (by invitation)

Saint-Léonard

- > Collectif jeunesse de Saint-Léonard
- > Assemblées de Concertation Saint-Léonard

Saint-Michel

- > Concertation Réussite éducative, qualification et emploi (REQE) de Vivre Saint-Michel en santé
- > REQE's evaluation committee
- > Comité transition 2 (elementary to high school)

Sud-Ouest

- > Sud-Ouest action plan monitoring committee (by invitation)
- > James Lyng community learning center

NETWORK OF REGIONAL CONSULTING AUTHORITIES ON STUDENT RETENTION AND EDUCATIONAL SUCCESS

Many regions of Québec have a regional joint-action organization (instance régionale de concertation—IRC) that, like Montreal Hooked on School, supports stakeholder mobilization and partnerships aimed at encouraging school perseverance. Montreal Hooked on School plays an active role on the IRC coordination committee, which is a forum for discussing priorities for action related to school perseverance and for working on collective issues, including work/school balance and Hooked on School Days.

HIGHLIGHTS

- > Participation on the network's coordination committee
- > Participation in the province-wide "Be a Superhero" campaign, as part of Hooked on School Days
- > Participation on the Hooked on School Days 2016 communication committee
- > Coordination of the working group to develop a reference guide on the theoretical underpinnings of IRC actions
- > Launch of a steering committee involving the ministère de l'Éducation et de l'Enseignement supérieur and IRCs to implement actions under the government's reinvestment
- > Contribution to the work/school balance component in the development of a distribution plan for the resource *jeconcilie.com*
- > Assumption of fiduciary responsibility for the network



Priority for action 3

DOCUMENT, PROMOTE & DISSEMINATE INFORMATION RELEVANT TO ACTIONS THAT ENCOURAGE SCHOOL PERSEVERANCE AND SUCCESS

Thanks to its role and the knowledge of its network of partners, Montreal Hooked on School has become highly adept at identifying and shedding light on key issues related to taking action on school perseverance in Montreal.

To this end, MHS documents, assembles, and disseminates information aimed at enhancing stakeholders' capacity for action by fostering a better understanding of school perseverance and success, especially from a Montreal-specific angle.

Document, assemble and disseminate high-quality and up-to-date information in order to:

> Foster a better understanding of school perseverance and success and of Montreal-specific factors

> Provide information on topics related to Montreal-based action on school perseverance and success, such as work/school balance, gender equality, and reading

> Support decision-making in matters related to school perseverance and educational success

> Communicate what is happening in Montreal to support the success of youth

CONTRIBUTION TO KNOWLEDGE ON SUBJECTS RELATED TO ACTION

Over the past year, Montreal Hooked on School has focused on two key topics in which MHS has produced situational analyses that have produced findings, shed new light, and deconstructed received ideas in order to raise awareness among stakeholders of these issues and equip them to intervene more effectively.

Moreover, we have taken various steps to ensure that information about these topics is disseminated and assimilated.

WORK/SCHOOL BALANCE

Since 2011, Montreal Hooked on School has focused in particular on the issue of work/school balance, an important determinant of school perseverance and educational success in young people.

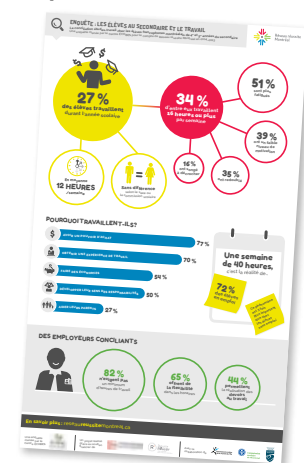
In 2015, MHS began a large-scale study on the work and lifestyle habits of young Montrealers. The study was conducted along with the Centre ÉCOBES and an advisory committee of school perseverance partners, and thanks to the participation of the three French-speaking school boards on the Island of Montreal.

The year 2015-2016 saw the release of the study's results, which greatly increased our understanding of the realities faced by working students.

HIGHLIGHTS

- > Analysis of survey data from over **2,000** secondary 4 and 5 students, and creation of a portrait with the Centre ÉCOBES
- > Organisation of the annual MHS seminar on the topic of work/school balance and introduction of the survey results to the nearly **100 participants**
- > Creation of the **Enquête: les élèves au secondaire et le travail** page on the MHS website, which presented the survey highlights and dissemination tools
- > Participation in the dissemination strategy of **JeConcilie.com** as part of the provincial work/school balance working group of the network of regional consulting authorities on student retention and educational success

> Presentation of the study results and the **JeConcilie.com** resource to over **110 school perseverance stakeholders and partners**



Up until May 2015, MHS also coordinated the employer component of the Équi T-É work/school balance program and continues to support youth employment centres in the youth component. In this capacity, MHS helped raise awareness of work/school balance among **2,281 youth**, thanks to **113 workshops** carried out by **9 youth employment centres**.⁶

Montreal Hooked on School received support from the following partners to implement these actions:



⁶ The Carrefours jeunesse-emploi of Ahuntsic-Bordeaux-Cartierville, Bourassa-Sauvé, Centre-Sud/Plateau Mont-Royal/Mile-End, Hochelaga-Maisonneuve, Marquette, Mercier, Ouest-de-l'Île, Pointe-aux-Trembles/Montréal-Est, and Saint-Laurent.



GENDER EQUALITY AND SCHOOL PERSEVERANCE

While the dropout rate among boys is of concern, that among girls is no less alarming, especially since in Montreal, girls drop out more than boys in some schools. MHS has therefore invested in this issue to encourage as many youth, girls as well as boys, to stay in school as possible.

Persevere in Equality

Launched in 2014–2015, this project aims to document the effects of sexual stereotypes on school progress and to suggest ways to encourage the implementation of more egalitarian planning, intervention practices, and actions.

Over the past year, the project produced the guide *Persévérer dans l'égalité!* (persevere in equality), which provides important information and avenues of action to prevent youth from forming and interiorizing sexual stereotypes in order to improve the effectiveness of school perseverance initiatives among girls and boys.

This action was carried out in partnership with the following organizations:

and the support of:



Secrétariat
à la condition
féminine



HIGHLIGHTS

- > Development of the **guide *Persévérer dans l'égalité!***, in partnership with Complice - Persévérance scolaire Gaspésie-Les Îles and the Table de Concertation des groupes de femmes Gaspésie—Îles-de-la-Madeleine (TCGF - GÎM)
- > Offered **65 hours of training to 129 people** in **six Montreal neighbourhoods** and **four territories of Gaspésie-Les Îles** to guide the assimilation of the resource in a variety of communities. (In the four territories, sessions were conducted by Complice - Persévérance scolaire Gaspésie-Les Îles, with 75 people taking part.)
- > Launch of the guide at a breakfast seminar on gender equality and school perseverance, attended by **70 guests**
- > Distribution of **230 guides** among local organizations in all sectors
- > Analysis of the initial effects:
 - **very positive reception** of the issue of gender equality
 - **raised awareness** of the significance of sexual stereotypes in the issue of school perseverance
- **better knowledge** of the different causes and consequences of dropping out for girls and boys
- **changes in practice:** a significant number of participants in the workshops now say they are more aware of their own biases and of group diversity

DOCUMENTATION OF THE MONTREAL SITUATION

In order to better understand school perseverance and success from a Montreal perspective and support actions adapted to the unique realities of each Montreal neighbourhood, MHS documents the situation in Montreal related to the main school perseverance issues.



LAUNCH OF THE NEW MHS WEBSITE AT WWW.RESEAREUSSITEMONTREAL.CA

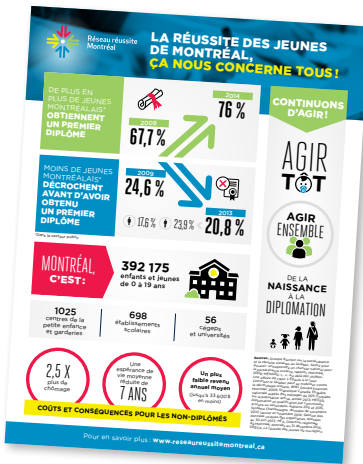
In 2015–2016, MHS launched a new website, which assembles up-to-date information on school perseverance and success in Montreal and makes it easily available. The new site features:

- > a Montreal-specific look at school perseverance
- > information that is accessible to non-specialists
- > key topics related to school perseverance in Montreal that deserve special attention
- > a portrait of the neighbourhoods in which MHS focuses its action
- > inspiring projects and ideas for action

Thank you to the members* of the advisory committee who supported the development of the new MHS website.

- > Matthew Albert, Lester B. Pearson School Board
- > Frédérique Bélair-Bonnet, Centraide of Greater Montreal
- > George Kalimeris, The YMCAs of Québec;
- > Catherine Legault, Board of Trade of Metropolitan Montreal
- > Jean-Michel Nahas, Commission scolaire Marguerite-Bourgeoys
- > Anne Veronneau, Commission scolaire Marguerite-Bourgeoys

*Indicated member affiliations correspond to the time of their participation on the committee.



DEVELOPMENT AND DISTRIBUTION OF FACT SHEET ON THE SITUATION IN MONTREAL

To provide easy access to information on the situation in Montreal, Montreal Hooked on School produced a fact sheet entitled *La réussite des jeunes de Montréal, ça nous concerne tous!*, a one-page portrait that assembles data on changes in graduation and dropout rates, on schools, and on the consequences of dropping out.

For more information about the situation in Montreal, visit www.researeussitemontreal.ca.





PROMOTION OF MONTREAL-BASED INFORMATION, ACTION, AND EXPERTISE

Montreal Hooked on School's communications are aimed at providing information on the situation of school perseverance in Montreal, ensuring that school perseverance remains a topic of interest, and publicizing efforts to support the success of Montreal youth.

SCHOOL PERSEVERANCE IN THE MEDIA

> **7 press releases** issued.

> **80 interviews and reports** recorded, primarily as part of HSD.

> **Of note:**

- 2015-11-23 – The program *Puisqu'il faut se lever* – 98.5 FM: coverage by Pierre-Yves McSween (economy columnist) on the release of the study about working students, conducted by the Centre ÉCOBES and commissioned by MHS.
- 2016-03-30 – The program *Mise à jour Montréal* – MaTV: appearance by the MHS executive director on a round table on how to combat the dropout problem in Montreal; also appearing were Catherine Harel Bourdon, president of the Commission scolaire de Montréal and Marie-Hélène Bohuon, co-director of Revdec.
- 2016-04-20 – The program *Le 15-18* – Radio-Canada Première: column on education by Xavier Brouillette on the release of *Persévérer dans l'égalité!*
- More and more journalists are referring to Montreal Hooked on School to find information about school perseverance in Montreal, and sometimes even in Québec as a whole.

TIES NEWSLETTER

> **3 issues** of the *TIES* newsletter, distributed to over **800 subscribers**, with an average reading rate of **44 percent**

SEMINARS, LECTURES AND PRESENTATIONS

Montreal Hooked on School's actions include information-sharing and networking activities that shed light on various issues related to school perseverance, that discuss possible solutions, and that support collective efforts among different sectors.

HIGHLIGHTS

- > Annual seminar on work/school balance (nearly 100 participants)
- > Meetings to distribute the results of the work/study balance study and *JeConcilie.com* (over 110 participants)
- > Breakfast seminar on gender equality and school perseverance (nearly 70 participants)
- > Training sessions to support assimilation of the guide *Persévérer dans l'égalité!* (nearly 45 participants)

(See pages 17 and 18 for a detailed account of these activities.)

Priority for action 4

IMPROVE EVALUATION STRATEGIES

EVALUATION OF THE STRATEGY TO SUPPORT AND GUIDE LOCAL ACTION

Since 2012, the Évalécole team, led by professor Michel Janosz of Université de Montréal, has been assisting MHS in measuring the effectiveness of its local action strategy. Divided into three phases, the evaluation aims to analyze regional mobilization, local mobilization, and the impacts of certain initiatives.

IMPACT STUDY

In 2015–2016, the data collection and analysis work was finalized, with the aim of assessing the effects of local initiatives, and the preliminary reports were presented to participating organizations. The process has revealed that the assessed actions have had positive effects on school perseverance and that the evaluation process was useful to organizations because it suggested avenues of improvement in the implementation of their actions that would maximize their effects.

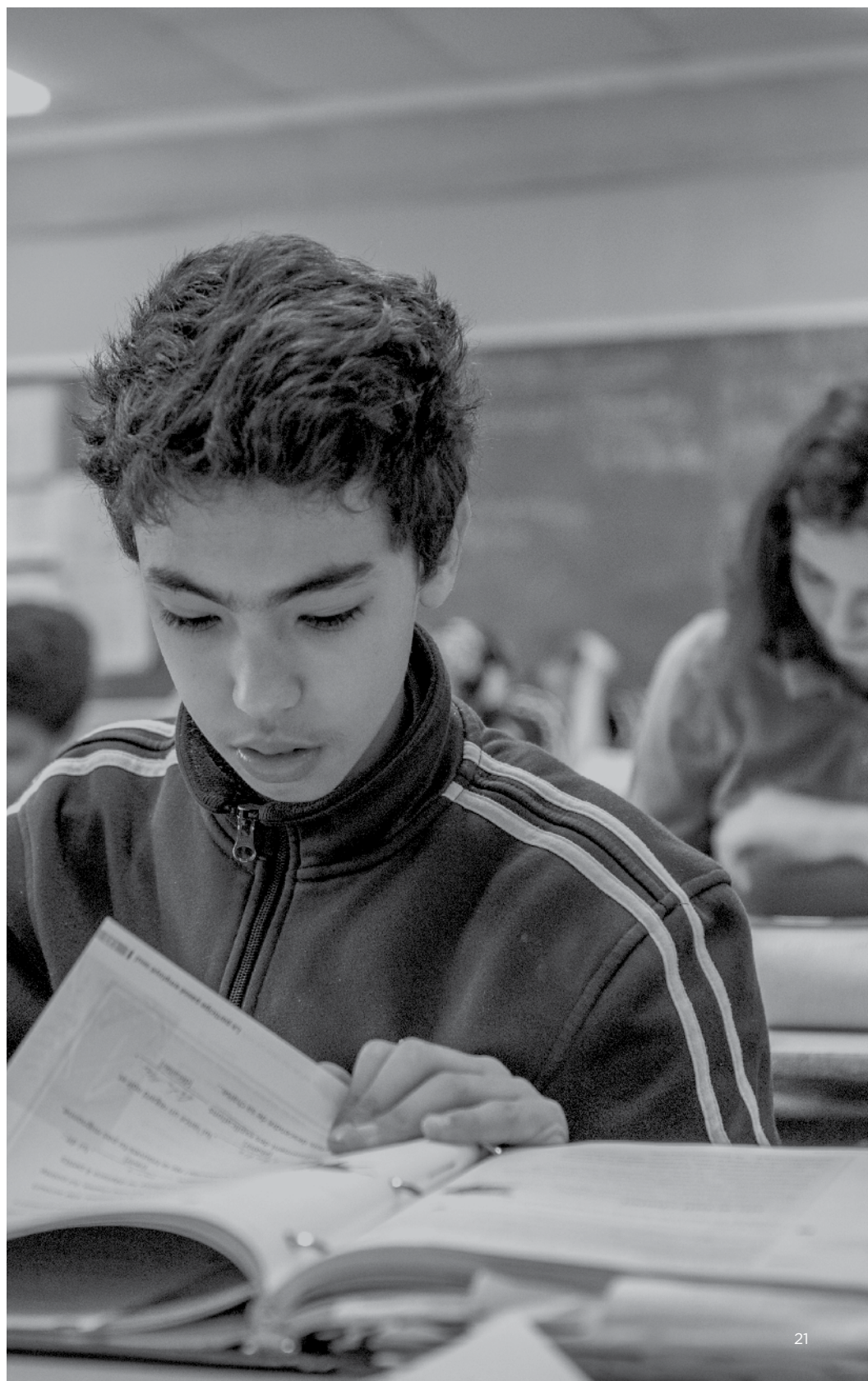
GUIDANCE FOR IMPROVING ORGANIZATIONS' EVALUATION CAPACITY

Due to financial constraints, MHS was unable to continue this action this year. However, we plan to gradually resume this work over the course of 2016–2017.

Reports for the first two assessment components are available on the MHS website.
www.researeussitemontreal.ca

HIGHLIGHTS

- > Submission of preliminary reports of initiative assessments
- > Presentation of results to participating organizations



FINANCIAL POSITION

FOR THE FISCAL YEAR ENDING JUNE 30, 2016

To aid in understanding, we have removed amounts related to mandates undertaken in trust by Montreal Hooked on School

REVENUE	2016	2015
Provincial grants	- \$	- \$
Ministère de l'Éducation et de l'Enseignement supérieur	\$217,349.00	\$430,315.00
Emploi-Québec	- \$	\$39,968.00
Secrétariat à la condition féminine	\$55,816.00	\$24,184.00
Municipal grants	- \$	- \$
Ville de Montréal	- \$	\$65,000.00
Contributions from other organizations	- \$	- \$
Réunir Réussir	\$14,166.00	\$2,935,884.00
Conférence régionale des élus de Montréal	- \$	\$20,000.00
FLAC - MHS	\$370,000.00	- \$
FLAC - IRC	\$83,345.00	- \$
CCMM	\$16,818.00	- \$
Forum jeunesse de l'île de Montréal	\$58,675.00	\$101,718.00
Avenir d'enfants	\$1,802.00	\$8,967.00
School boards	\$500,000.00	\$500,000.00
Revenue from trustees	\$500.00	\$8,561.00
Sponsorship revenue	- \$	\$5,000.00
Other revenue	\$17,380.00	\$15,087.00
TOTAL	\$1,335,851.00	\$4,154,684.00
EXPENDITURES		
Administration	\$273,575.00	\$342,626.00
Partnership activities	\$292,672.00	\$625,151.00
Development	\$82,250.00	\$105,060.00
Awareness campaign	\$83,393.00	\$175,833.00
Research and evaluation	- \$	\$113,498.00
Work/school balance	\$30,855.00	\$255,436.00
Support for targeted areas	\$590,176.00	\$2,433,388.00
Adopt a School	\$13,920.00	\$54,116.00
Gender equality	\$55,816.00	\$24,184.00
Facilitation activities	- \$	\$39,417.00
Documenting the Montreal reality	- \$	\$21,147.00
TOTAL	\$1,422,657.00	\$4,189,856.00
SURPLUS (SHORTFALL) OF INCOME OVER EXPENDITURES	\$(86,806.00)¹	\$(35,172.00)

¹ This deficit was planned by the Board of Trustees in order to protect MHS's core capacities and continue its activities during this transition year. MHS's accumulated surplus as of June 30, 2015 was \$302,214.

FINANCIAL PARTNERS

Thanks to the support of the five Island of Montreal school boards, Montreal Hooked on School was able to continue its activities throughout 2015-2016. We wish to thank them for their commitment and support during this particularly difficult time.



The implementation of Montreal Hooked on School's 2015-2016 action plan was made possible with the help of the following financial partners. We thank them for their support.



MISSION

Montreal Hooked on School's mission is to mobilize all partners in Montreal and become a focal point for initiatives that have a positive impact on young people, parents, and other concerned parties, with the objective of increasing school perseverance and success, and reconnection with school.

3 TARGETS

- > **Achieve and surpass** the government's high school graduation-rate target for Montreal of 77 percent by 2020.
- > **Support** school boards and targeted schools in reaching their graduation-rate targets and in implementing their success plans.
- > **Contribute** to reducing the vulnerability rate among preschoolers entering school.

4 PRIORITIES FOR ACTION

- > **Support** action in the Island of Montreal's most sensitive areas, focusing on specific territories.
- > **Foster** connections among all partners and the community, as well as the cohesion of actions to promote school perseverance and success.
- > **Document, promote and disseminate** information relevant to actions that encourage school perseverance and success.
- > **Improve** evaluation strategies.

5 ORIENTATIONS

- > **Strengthen** prevention strategies for 0-12-year-olds.
- > **Help** 13-20-year-olds stay in, or return to, school.
- > **Mobilize** local, regional and interregional stakeholders.
- > **Document** the Montreal reality and support knowledge transfer.
- > **Promote** the value of education.

To find out more about MHS:
www.reseautreussitemontreal.ca

Members

With the support of its 33 regional members, including the five Island of Montreal school boards, MHS acts as a mobilizing force and a catalyst to engage key figures in Montreal in a united effort. Together, the members work to develop partnership projects aimed at increasing the scope and effect of actions that promote school perseverance, educational success, and reconnection with school.



Montreal
Hooked on School

1100 5th Avenue
Verdun, Quebec H4G 2Z6
T. 514 286-2346
www.researeussitemontreal.ca

Proud partner of Montreal Hooked on School's 2010–2015 action plan

Québec 

EDUCATIONAL SECTOR



- > Association des enseignantes et enseignants de Montréal (Montreal Teachers Association)
- > Association montréalaise des directions d'établissement scolaire (AMDES)
- > Association of Montreal School Administrators (Association des cadres scolaires de Montréal)
- > Fédération autonome de l'enseignement

HIGHER EDUCATION SECTOR

- > Regroupement des collèges du Montréal métropolitain (RCMM)
- > Université du Québec à Montréal
- > McGill University

COMMUNITY SECTOR

- > Institut de coopération pour l'éducation des adultes (ICÉA)
- > Regroupement des organismes communautaires québécois de lutte au décrochage scolaire (ROCLD)
- > Table des Carrefours jeunesse-emploi de l'Île-de-Montréal
- > The YMCAs of Québec

INSTITUTIONAL SECTOR

- > Agence de la santé et des services sociaux de Montréal
- > Comité de gestion de la taxe scolaire de l'île de Montréal
- > Concertation Montréal
- > Conseil régional des partenaires du marché du travail
- > Emploi-Québec
- > Forum jeunesse de l'île de Montréal
- > Ministère de l'Éducation et de l'Enseignement supérieur – Une école montréalaise pour tous
- > Ministère de la Famille
- > Ministère de l'Immigration, de la Diversité et de l'Inclusion
- > Service de police de la Ville de Montréal
- > Ville de Montréal

BUSINESS SECTOR

- > Centraide of Greater Montreal
- > Chamber of Commerce of Metropolitan Montreal
- > Drakar & Partners
- > Fondation de lutte au décrochage scolaire

GUESTS

- > Table de concertation des organismes au service des personnes réfugiées et immigrantes (TCRI)
- > Fonds 1804 pour la persévérance scolaire

OBSERVERS

- > Communauté métropolitaine de Montréal